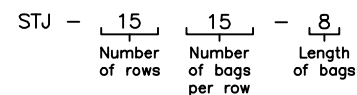


Sly TubeJet Model STJ (TOP BAG REMOVAL)

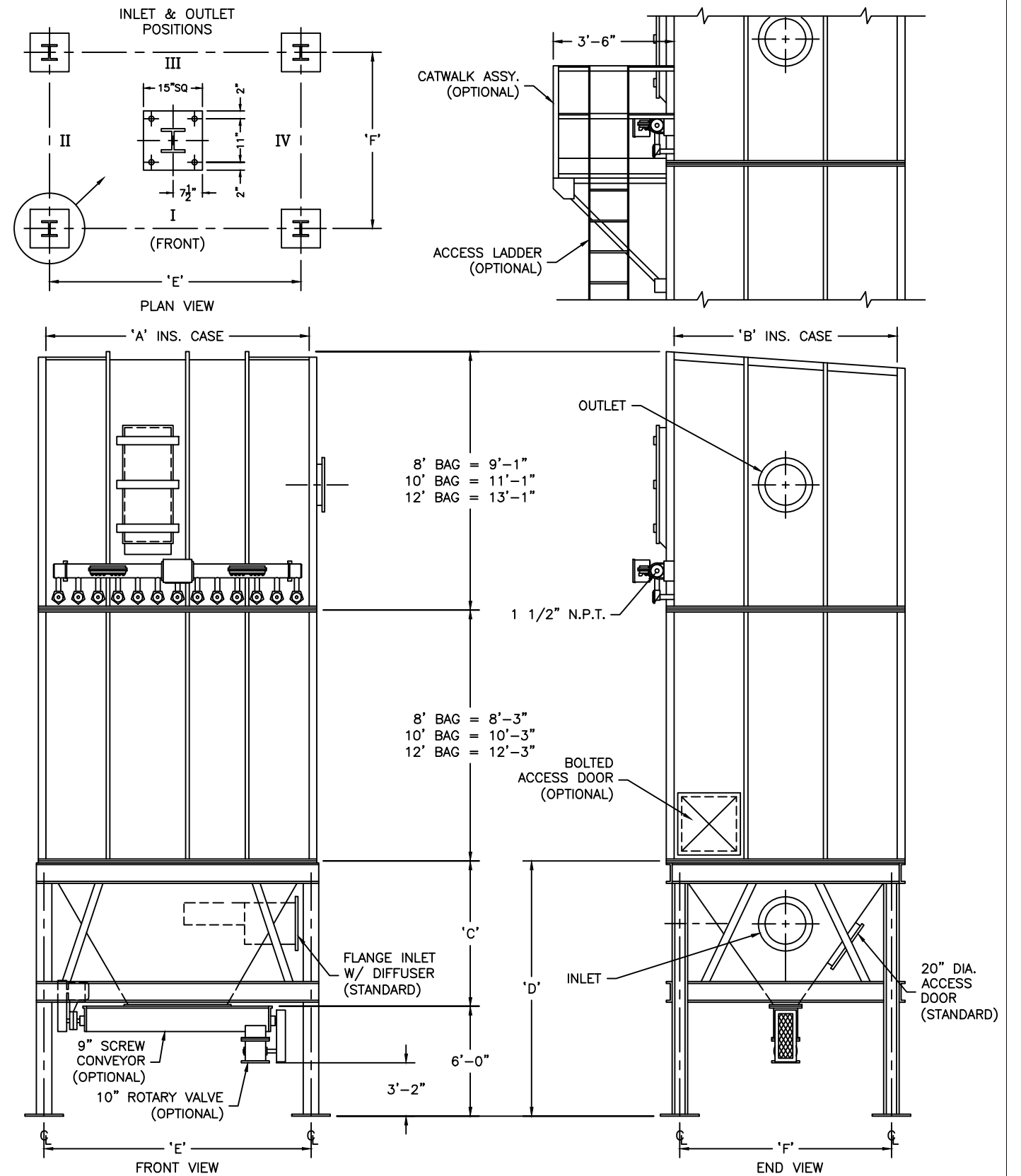
Model No.	Bag Length (ft)	Cloth Area (SQ. ft.)	Bag Quantity	Air Usage (SCFM @ 90 psig)*	A	B	C	D	E	F
STJ-1216-	8 10 12	2304 2880 3456	192	24	8'-0"	10'-8"	9'-3"	15'-3"	7'- 11 13/16"	10'- 2 1/16"
STJ-1416-	8 10 12	2688 3360 4032	224	24	9'-4"	10'-8"	9'-3"	15'-3"	9'- 3 13/16"	10'- 2 1/16"
STJ-1616-	8 10 12	3072 22840 4608	256	24	10'-8"	10'-8"	9'-3"	15'-3"	10'- 7 13/16"	10'- 2 1/16"
STJ-1816-	8 10 12	3456 4320 5184	288	25	12'-0"	10'-8"	9'-3"	15'-3"	12'- 11 13/16"	10'- 2 1/16"
STJ-2016-	8 10 12	3840 4800 5760	320	25	13'-4"	10'-8"	9'-3"	15'-3"	13'- 3 13/16"	10'- 2 1/16"
STJ-2216-	8 10 12	4224 5280 6336	352	32	14'-8"	10'-8"	9'-3"	15'-3"	14'- 7 13/16"	10'- 2 1/16"
STJ-2416-	8 10 12	4608 5760 6912	384	24	16'-0"	10'-8"	9'-3"	15'-3"	15'- 11 13/16"	10'- 2 1/16"
STJ-2616-	8 10 12	4992 6240 7488	416	24	17'-4"	10'-8"	9'-3"	15'-3"	17'- 3 13/16"	10'- 2 1/16"
STJ-2816-	8 10 12	5376 6720 8064	448	25	18'-8"	10'-8"	9'-3"	15'-3"	18'- 7 13/16"	10'- 2 1/16"
STJ-3016-	8 10 12	5760 7200 8640	480	26	20'-0"	10'-8"	9'-3"	15'-3"	20'- 11 13/16"	10'- 2 1/16"
STJ-3216-	8 10 12	6144 7680 9216	512	28	21'-4"	10'-8"	9'-3"	15'-3"	21'- 3 13/16"	10'- 2 1/16"
STJ-3416-	8 10 12	6528 8160 9792	544	30	22'-8"	10'-8"	9'-3"	15'-3"	22'- 7 13/16"	10'- 2 1/16"
STJ-3616-	8 10 12	6912 8640 10368	576	32	24'-0"	10'-8"	9'-3"	15'-3"	23'- 11 13/16"	10'- 2 1/16"
STJ-3816-	8 10 12	7296 9120 10944	608	33	25'-4"	10'-8"	9'-3"	15'-3"	25'- 3 13/16"	10'- 2 1/16"
STJ-4016-	8 10 12	7680 9600 11520	640	34	26'-8"	10'-8"	9'-3"	15'-3"	26'- 7 13/16"	10'- 2 1/16"
STJ-4216-	8 10 12	8064 10080 12096	672	36	28'-0"	10'-8"	9'-3"	15'-3"	27'- 11 13/16"	10'- 2 1/16"
STJ-4416-	8 10 12	8448 10560 12672	704	37	29'-4"	10'-8"	9'-3"	15'-3"	29'- 3 13/16"	10'- 2 1/16"
STJ-4616-	8 10 12	8832 11040 13248	736	39	30'-8"	10'-8"	9'-3"	15'-3"	30'- 7 13/16"	10'- 2 1/16"
STJ-4816-	8 10 12	9216 11520 13824	768	40	32'-0"	10'-8"	9'-3"	15'-3"	32'- 11 13/16"	10'- 2 1/16"
STJ-5016-	8 10 12	9600 12000 14400	800	41	33'-4"	10'-8"	9'-3"	15'-3"	33'- 3 13/16"	10'- 2 1/16"

How to Determine Your Model Number



* Guideline based on 10 second off-time between pulses and 100 millisecond pulse duration ~ may change based on application

NOT FOR CONSTRUCTION



MODEL NO. _____
 VOLUME _____ CFM
 TEMPERATURE _____ °F
 DUST _____
 LOADING _____ GR/CF
 CLOTH AREA _____ SQ.FT.
 NO. OF BAGS _____
 A/C RATIO _____ :1
 PROCESS _____

- NOTES:
- Inlet size based on 3000 fpm maximum velocity.
 - Standard exhaust connection either right or left of header.
 - Six (6) leg support for model 3115 and all units larger. Center leg at collector centerline.
 - Magnehelic gauge w/ bracket, tubing & fittings.
 - Unless otherwise specified, timers shipped assembled & pre-wired to solenoid enclosure.
 - Drawing dimensions are subject to change without prior notice.

SLY INC.
 TECHNOLOGY FOR A CLEAN ENVIRONMENT
 8300 Dow Circle, Suite 600
 Strongsville, OH 44136
 1-800-334-2957
 In Ohio (440) 891-3200
 FAX: (440) 891-3210

STJ-505-4(B)