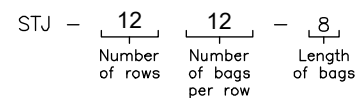


Sly TubeJet Model STJ (4.5)

(TOP BAG REMOVAL)

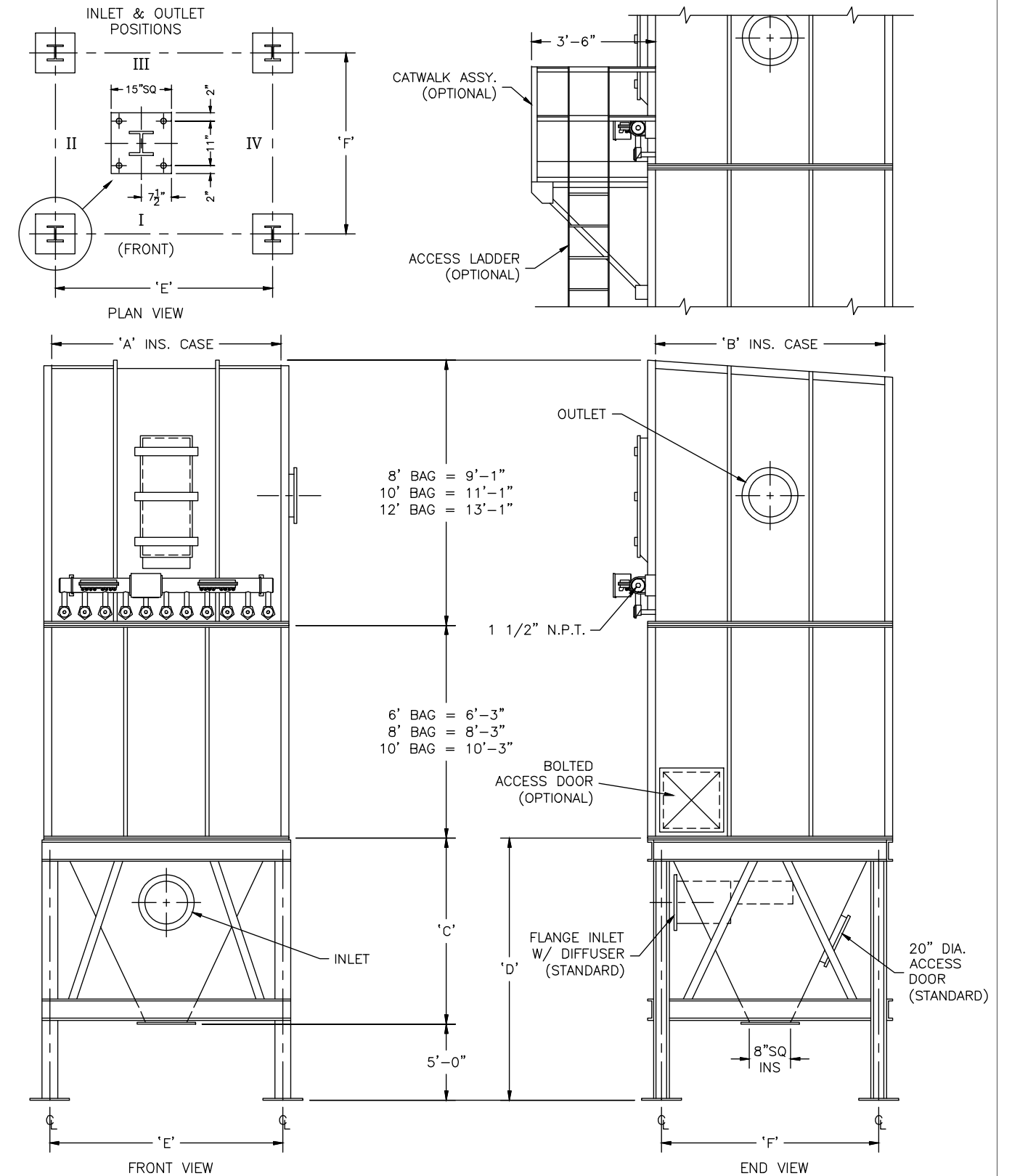
Model No.	Bag Length (ft)	Cloth Area (SQ. ft.)	Bag Quantity	Air Usage (SCFM @ 90 psig)*	Hopper Quantity	A	B	C	D	E	F
STJ-128-	6 8 10	867 1156 1445	96	13	1	8'-0"	5'-4"	6'-5"	11'-5"	7'-11 13/16"	4'-10 1/16"
STJ-1012-	6 8 10	876 1164 1452	120	24	1	6'-8"	8'-0"	5'-10"	10'-10"	6'-7 13/16"	7'-6 1/16"
STJ-1212-	6 8 10	1051 1397 1742	144	25	1	8'-0"	8'-0"	5'-10"	10'-10"	7'-11 13/16"	7'-6 1/16"
STJ-1412-	6 8 10	1226 1630 2033	168	31	1	9'-4"	8'-0"	7'-0"	12'-0"	9'-3 13/16"	7'-6 1/16"
STJ-1612-	6 8 10	1402 1862 2323	192	24	1	10'-8"	8'-0"	8'-1"	13'-1"	10'-4 13/16"	7'-6 1/16"
STJ-1812-	8 10	2095 2614	216	24	1	12'-0"	8'-0"	9'-3"	14'-3"	11'-11 13/16"	7'-6 1/16"
STJ-2012-	8 10	2328 2904	240	24	1	13'-4"	8'-0"	10'-5"	15'-5"	13'-3 13/16"	7'-6 1/16"
STJ-2212-	8 10	2561 3194	264	24	2	14'-8"	8'-0"	11'-7"	16'-7"	14'-7 13/16"	7'-6 1/16"
STJ-2412-	8 10	2794 3485	288	25	2	16'-0"	8'-0"	6'-5"	11'-5"	15'-11 13/16"	7'-6 1/16"
STJ-2612-	8 10	3026 3775	312	25	2	17'-4"	8'-0"	7'-0"	12'-0"	17'-3 13/16"	7'-6 1/16"
STJ-2812-	8 10	3259 4066	336	32	2	18'-8"	8'-0"	7'-6"	12'-6"	18'-7 13/16"	7'-6 1/16"
STJ-3012-	8 10	3492 4356	360	24	2	20'-0"	8'-0"	8'-1"	13'-1"	19'-11 13/16"	7'-6 1/16"
STJ-3212-	8 10	3725 4646	384	24	2	21'-4"	8'-0"	8'-8"	13'-8"	21'-3 13/16"	7'-6 1/16"
STJ-3412-	8 10	3958 4937	408	24	2	22'-8"	8'-0"	9'-3"	14'-3"	22'-7 13/16"	7'-6 1/16"
STJ-3612-	8 10	4190 5227	432	26	3	24'-0"	8'-0"	9'-10"	14'-10"	23'-11 13/16"	7'-6 1/16"
STJ-3812-	8 10	4423 5518	456	28	3	25'-4"	8'-0"	10'-5"	15'-5"	25'-3 13/16"	7'-6 1/16"
STJ-4012-	8 10	4656 5808	480	30	3	26'-8"	8'-0"	11'-0"	16'-0"	26'-7 13/16"	7'-6 1/16"
STJ-4212-	8 10	4889 6098	504	32	3	28'-0"	8'-0"	11'-7"	16'-7"	27'-11 13/16"	7'-6 1/16"

How to Determine Your Model Number



* Guideline based on 10 second off time between pulses and 100 millisecond pulse duration ~ may change based on application

NOT FOR CONSTRUCTION



MODEL NO. _____
 VOLUME _____ CFM
 TEMPERATURE _____ °F
 DUST _____
 LOADING _____ GR/CF
 CLOTH AREA _____ SQ.FT.
 NO. OF BAGS _____
 A/C RATIO _____ :1
 PROCESS _____

NOTES:
 - Inlet size based on 3000 fpm maximum velocity.
 - Standard exhaust connection either right or left of header.
 - Six (6) leg support for model 2412 and all units larger. Center leg at collector centerline.
 - Magnehelic gauge w/ bracket, tubing & fittings.
 - Unless otherwise specified, timers shipped assembled & pre-wired to solenoid enclosure.
 - Drawing dimensions are subject to change without prior notice.

SLY INC.
 TECHNOLOGY FOR A CLEAN ENVIRONMENT
 8300 Dow Circle, Suite 600
 Strongsville, OH 44136
 1-800-334-2957
 In Ohio (440) 891-3200
 FAX: (440) 891-3210

STJ-501-2(4.5) (A)