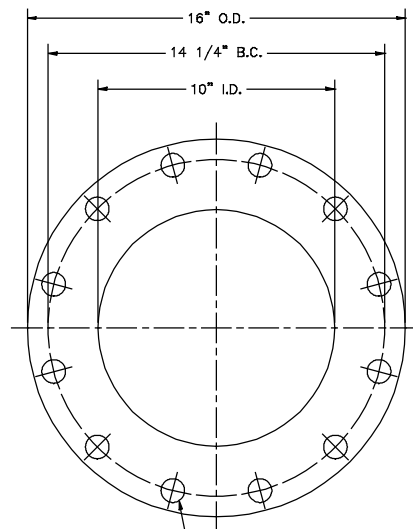


(8) 7/8" DIA. HOLES ~ EQ. SPA.  
~ STRADDLE CENTER LINES

8" DIA. R.F. FLANGE ~ 150 LBS. DRILLING

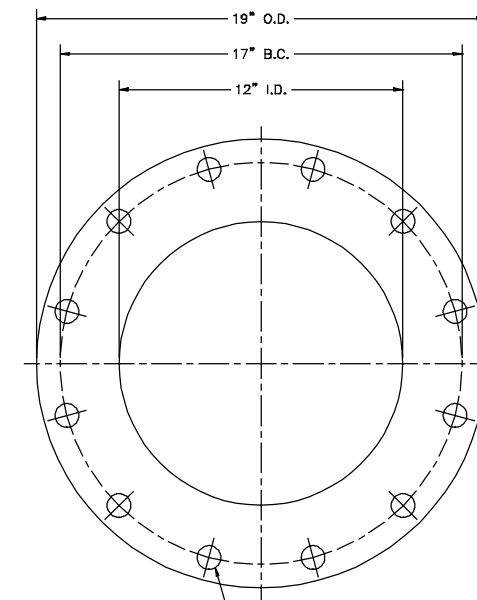
MATERIAL: 1/4" THK. CARBON STEEL



(12) 1" DIA. HOLES ~ EQ. SPA.  
~ STRADDLE CENTER LINES

10" DIA. R.F. FLANGE ~ 150 LBS. DRILLING

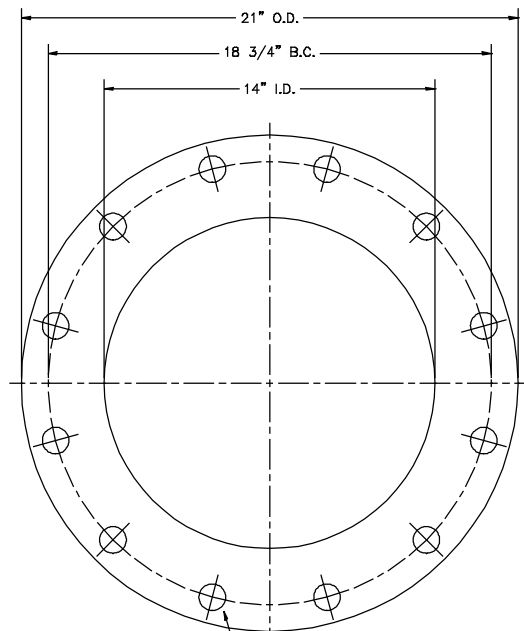
MATERIAL: 1/4" THK. CARBON STEEL



(12) 1" DIA. HOLES ~ EQ. SPA.  
~ STRADDLE CENTER LINES

12" DIA. R.F. FLANGE ~ 150 LBS. DRILLING

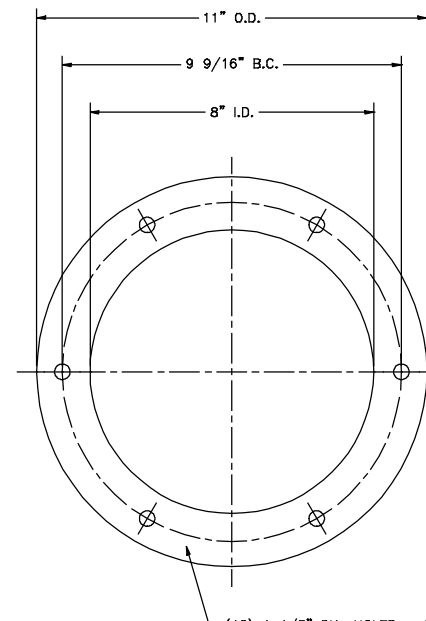
MATERIAL: 1/4" THK. CARBON STEEL



(12) 1 1/8" DIA. HOLES ~ EQ. SPA.  
~ STRADDLE CENTER LINES

14" DIA. R.F. FLANGE ~ 150 LBS. DRILLING

MATERIAL: 1/4" THK. CARBON STEEL



(12) 1 1/8" DIA. HOLES ~ EQ. SPA.  
~ STRADDLE CENTER LINES

8" DIA. R.F. NEGATIVE AIR CONNECTION FLANGE

MATERIAL: 12 GA. CARBON STEEL



REV.	DATE	DESCRIPTION	BY	APP'D

DRAWN BY JEK		SLY Incorporated LOADING SPOUT & POSITIONER PRODUCTS 8300 DOW CIRCLE, STRONGSVILLE, OHIO 44136 (440)891-3200 * FAX:(440)891-3210 WWW.SLYINC.COM	
DATE 4/16/14		FOR REPLACEMENT PARTS CALL * 1-800-334-2957	
CHECKED BY	TITLE	XP-8 & 10 QS SPOUT R.F. FLANGE DETAILS	
DATE	CUSTOMER	DWG. No.	REV.
ORDER STANDARD			R.F. FLANGE
DO NOT SCALE DWG.			