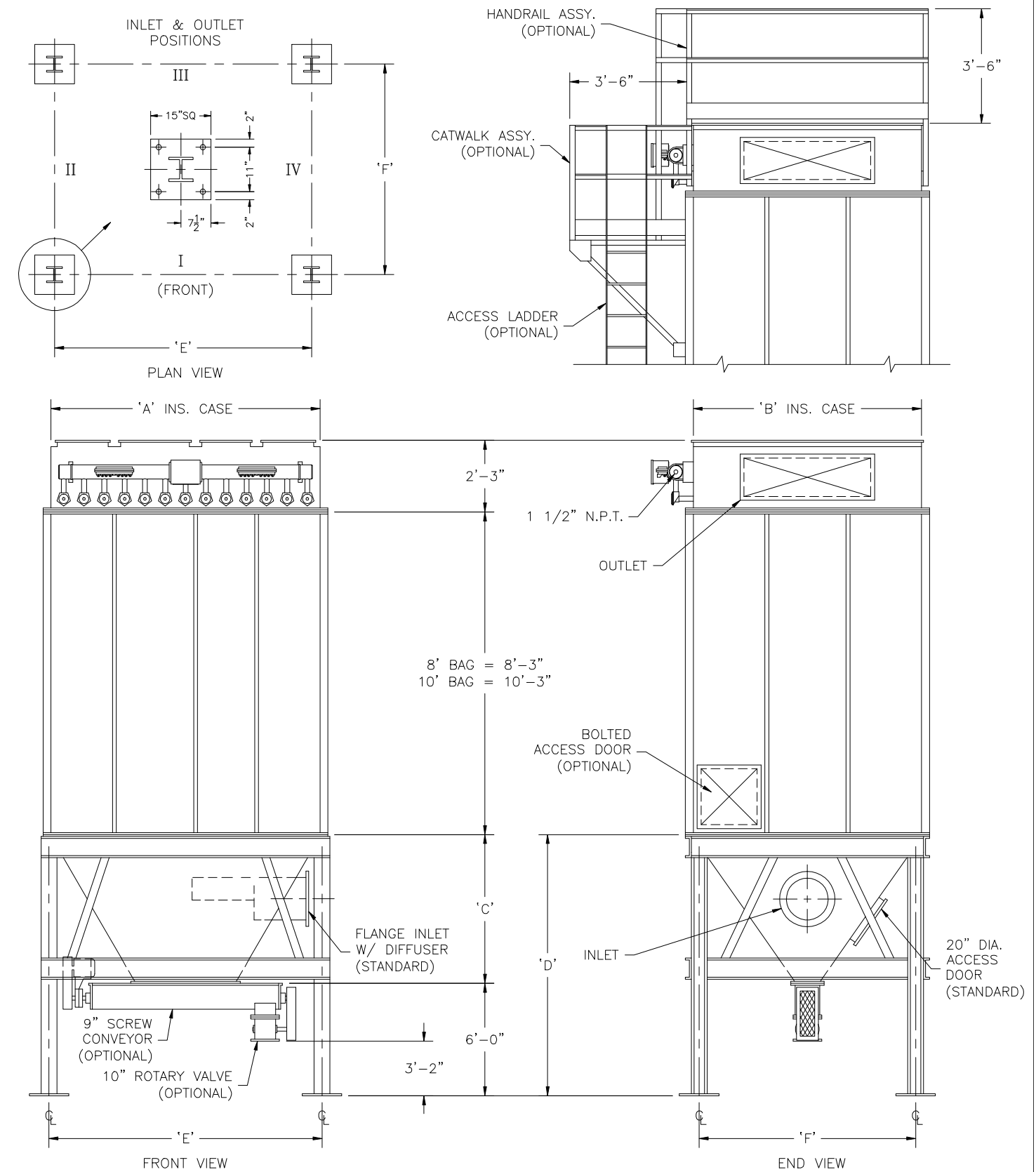
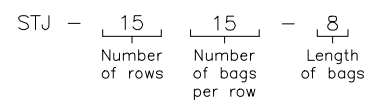


Sly TubeJet Model STJ (TOP BAG REMOVAL)

| Model No. | Bag Length (ft.) | Cloth Area (SQ. ft.) | Bag Quantity | Air Usage (SCFM @ 90 psig)* | A | B | C | D | E | F |
|-----------|------------------|------------------------|--------------|-----------------------------|--------|--------|-------|--------|---------------|------------|
| STJ-1315- | 8 10 12 | 2340 2925 3510 | 195 | 31 | 8'-8" | 10'-0" | 8'-1" | 14'-1" | 8'-7 13/16" | 9'-6 1/16" |
| STJ-1515- | 8 10 12 | 2700 3375 4050 | 225 | 24 | 10'-0" | 10'-0" | 8'-1" | 14'-1" | 9'-11 13/16" | 9'-6 1/16" |
| STJ-1715- | 8 10 12 | 3060 3825 4590 | 255 | 24 | 11'-4" | 10'-0" | 8'-1" | 14'-1" | 11'-3 13/16" | 9'-6 1/16" |
| STJ-1915- | 8 10 12 | 3420 4275 5130 | 285 | 24 | 12'-8" | 10'-0" | 8'-1" | 14'-1" | 12'-7 13/16" | 9'-6 1/16" |
| STJ-2115- | 8 10 12 | 3780 4725 5670 | 315 | 24 | 14'-0" | 10'-0" | 8'-1" | 14'-1" | 13'-11 13/16" | 9'-6 1/16" |
| STJ-2315- | 8 10 12 | 4140 5175 6210 | 345 | 25 | 15'-4" | 10'-0" | 8'-1" | 14'-1" | 15'-3 13/16" | 9'-6 1/16" |
| STJ-2515- | 8 10 12 | 4500 5625 6750 | 375 | 25 | 16'-8" | 10'-0" | 8'-1" | 14'-1" | 16'-7 13/16" | 9'-6 1/16" |
| STJ-2715- | 8 10 12 | 4860 6075 7290 | 405 | 32 | 18'-0" | 10'-0" | 8'-1" | 14'-1" | 17'-11 13/16" | 9'-6 1/16" |
| STJ-2915- | 8 10 12 | 5220 6525 7830 | 435 | 24 | 19'-4" | 10'-0" | 8'-1" | 14'-1" | 19'-3 13/16" | 9'-6 1/16" |
| STJ-3115- | 8 10 12 | 5580 6975 8370 | 465 | 24 | 20'-8" | 10'-0" | 8'-1" | 14'-1" | 20'-7 13/16" | 9'-6 1/16" |
| STJ-3315- | 8 10 12 | 5940 7425 8910 | 465 | 25 | 22'-0" | 10'-0" | 8'-1" | 14'-1" | 21'-11 13/16" | 9'-6 1/16" |
| STJ-3515- | 8 10 12 | 6300 7875 9450 | 525 | 26 | 23'-4" | 10'-0" | 8'-1" | 14'-1" | 23'-3 13/16" | 9'-6 1/16" |
| STJ-3715- | 8 10 12 | 6660 8325 9990 | 555 | 28 | 24'-8" | 10'-0" | 8'-1" | 14'-1" | 24'-7 13/16" | 9'-6 1/16" |
| STJ-3915- | 8 10 12 | 7020 8775 10530 | 585 | 30 | 26'-0" | 10'-0" | 8'-1" | 14'-1" | 25'-11 13/16" | 9'-6 1/16" |
| STJ-4115- | 8 10 12 | 7380 9225 11070 | 615 | 32 | 27'-4" | 10'-0" | 8'-1" | 14'-1" | 27'-3 13/16" | 9'-6 1/16" |
| STJ-4315- | 8 10 12 | 7740 9675 11610 | 645 | 33 | 28'-8" | 10'-0" | 8'-1" | 14'-1" | 28'-7 13/16" | 9'-6 1/16" |
| STJ-4515- | 8 10 12 | 8100 10125 12150 | 675 | 34 | 30'-0" | 10'-0" | 8'-1" | 14'-1" | 29'-11 13/16" | 9'-6 1/16" |
| STJ-4715- | 8 10 12 | 8460 10575 12690 | 705 | 36 | 31'-4" | 10'-0" | 8'-1" | 14'-1" | 31'-3 13/16" | 9'-6 1/16" |
| STJ-4915- | 8 10 12 | 8820 11025 13230 | 735 | 37 | 32'-8" | 10'-0" | 8'-1" | 14'-1" | 32'-7 13/16" | 9'-6 1/16" |
| STJ-5115- | 8 10 12 | 9180 11475 13770 | 765 | 39 | 34'-0" | 10'-0" | 8'-1" | 14'-1" | 33'-11 13/16" | 9'-6 1/16" |



How to Determine Your Model Number



* Guideline based on 10 second off time between pulses and 100 millisecond pulse duration ~ may change based on application

NOT FOR CONSTRUCTION

MODEL NO. _____
 VOLUME _____ CFM
 TEMPERATURE _____ °F
 DUST _____
 LOADING _____ GR/CF
 CLOTH AREA _____ SQ.FT.
 NO. OF BAGS _____
 A/C RATIO _____ :1
 PROCESS _____

- NOTES:
- Inlet size based on 3000 fpm maximum velocity.
 - Standard exhaust connection either right or left of header.
 - Six (6) leg support for model 3115 and all units larger. Center leg at collector centerline.
 - Magnehetic gauge w/ bracket, tubing & fittings.
 - Unless otherwise specified, timers shipped assembled & pre-wired to solenoid enclosure.
 - Drawing dimensions are subject to change without prior notice.

SLY INC.
 TECHNOLOGY FOR A CLEAN ENVIRONMENT
 8300 Dow Circle
 Strongsville, OH 44136
 1-800-334-2957
 In Ohio (440) 891-3200
 FAX: (440) 891-3210

STJ-505-3(A)