

# Sly TubeJet Model STJ (TOP BAG REMOVAL)

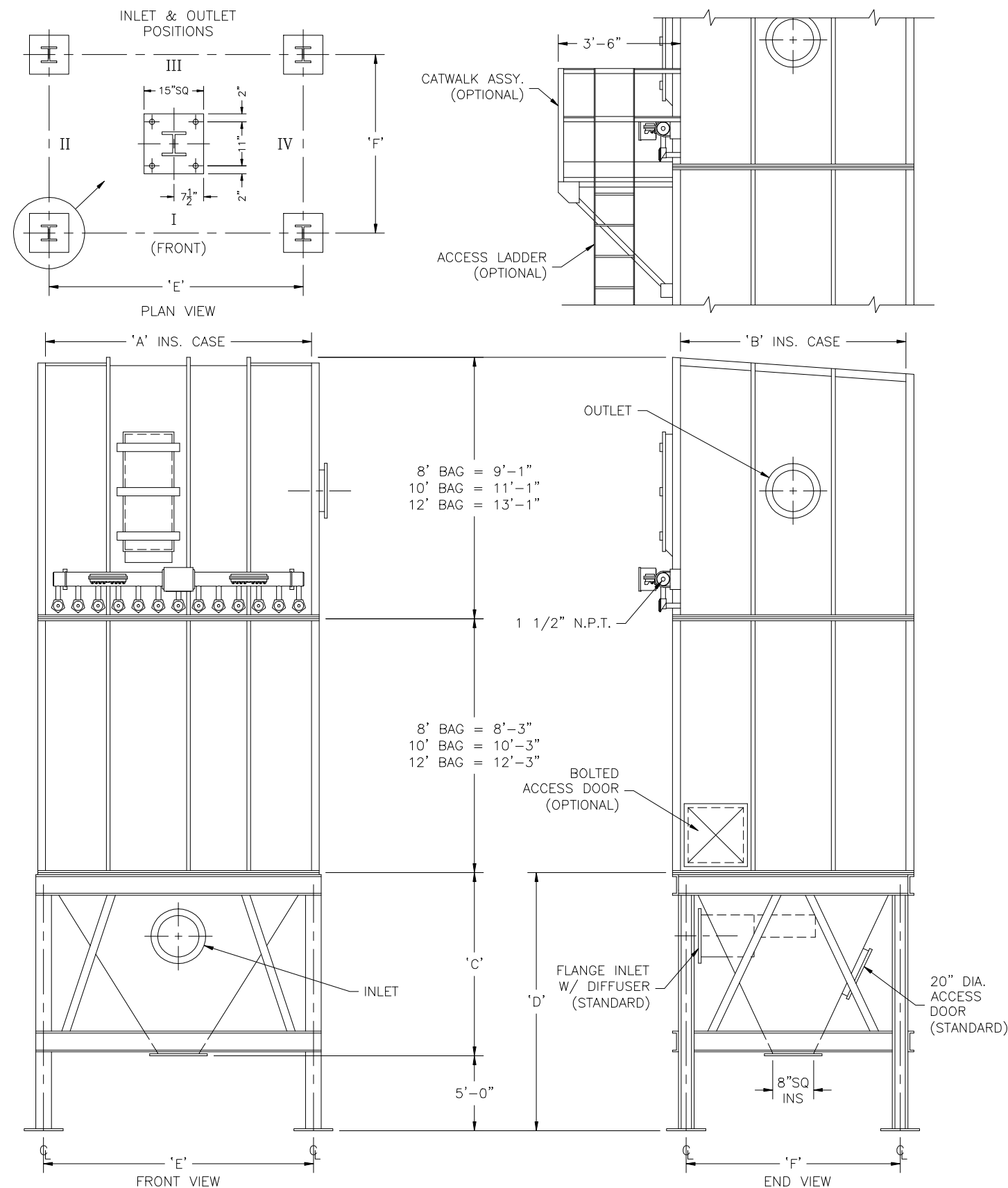
Model No.	Bag Length (ft.)	Cloth Area (SQ. ft.)	Bag Quantity	Air Usage (SCFM @ 90 psig)*	Hopper Quantity	A	B	C	D	E	F
STJ-1315-	8 10 12	2340 2925 3510	195	31	1	8'-8"	10'-0"	8'-1"	13'-1"	8'-7 13/16"	9'-6 1/16"
STJ-1515-	8 10 12	2700 3375 4050	225	24	1	10'-0"	10'-0"	8'-1"	13'-1"	9'-11 13/16"	9'-6 1/16"
STJ-1715-	8 10 12	3060 3825 4590	255	24	1	11'-4"	10'-0"	9'-3"	14'-3"	11'-3 13/16"	9'-6 1/16"
STJ-1915-	8 10 12	3420 4275 5130	285	24	2	12'-8"	10'-0"	8'-1"	13'-1"	12'-7 13/16"	9'-6 1/16"
STJ-2115-	8 10 12	3780 4725 5670	315	24	2	14'-0"	10'-0"	8'-1"	13'-1"	13'-11 13/16"	9'-6 1/16"
STJ-2315-	8 10 12	4140 5175 6210	345	25	2	15'-4"	10'-0"	8'-1"	13'-1"	15'-3 13/16"	9'-6 1/16"
STJ-2515-	8 10 12	4500 5625 6750	375	25	2	16'-8"	10'-0"	8'-1"	13'-1"	16'-7 13/16"	9'-6 1/16"
STJ-2715-	8 10 12	4860 6075 7290	405	32	2	18'-0"	10'-0"	8'-1"	13'-1"	17'-11 13/16"	9'-6 1/16"
STJ-2915-	8 10 12	5220 6525 7830	435	24	2	19'-4"	10'-0"	8'-1"	13'-1"	19'-3 13/16"	9'-6 1/16"
STJ-3115-	8 10 12	5580 6975 8370	465	24	3	20'-8"	10'-0"	8'-1"	13'-1"	20'-7 13/16"	9'-6 1/16"
STJ-3315-	8 10 12	5940 7425 8910	465	25	3	22'-0"	10'-0"	8'-1"	13'-1"	21'-11 13/16"	9'-6 1/16"
STJ-3515-	8 10 12	6300 7875 9450	525	26	3	23'-4"	10'-0"	8'-1"	13'-1"	23'-3 13/16"	9'-6 1/16"
STJ-3715-	8 10 12	6660 8325 9990	555	28	3	24'-8"	10'-0"	8'-1"	13'-1"	24'-7 13/16"	9'-6 1/16"
STJ-3915-	8 10 12	7020 8775 10530	585	30	3	26'-0"	10'-0"	8'-1"	13'-1"	25'-11 13/16"	9'-6 1/16"
STJ-4115-	8 10 12	7380 9225 11070	615	32	3	27'-4"	10'-0"	8'-1"	13'-1"	27'-3 13/16"	9'-6 1/16"
STJ-4315-	8 10 12	7740 9675 11610	645	33	3	28'-8"	10'-0"	8'-1"	13'-1"	28'-7 13/16"	9'-6 1/16"
STJ-4515-	8 10 12	8100 10125 12150	675	34	3	30'-0"	10'-0"	8'-1"	13'-1"	29'-11 13/16"	9'-6 1/16"
STJ-4715-	8 10 12	8460 10575 12690	705	36	4	31'-4"	10'-0"	8'-1"	13'-1"	31'-3 13/16"	9'-6 1/16"
STJ-4915-	8 10 12	8820 11025 13230	735	37	4	32'-8"	10'-0"	8'-1"	13'-1"	32'-7 13/16"	9'-6 1/16"
STJ-5115-	8 10 12	9180 11475 13770	765	39	4	34'-0"	10'-0"	8'-1"	13'-1"	33'-11 13/16"	9'-6 1/16"

How to Determine Your Model Number

STJ -  $\frac{15}{\text{Number of rows}}$   $\frac{15}{\text{Number of bags per row}}$  -  $\frac{8}{\text{Length of bags}}$

\* Guideline based on 10 second off time between pulses and 100 millisecond pulse duration ~ may change based on application

NOT FOR CONSTRUCTION



MODEL NO. \_\_\_\_\_  
 VOLUME \_\_\_\_\_ CFM  
 TEMPERATURE \_\_\_\_\_ °F  
 DUST \_\_\_\_\_  
 LOADING \_\_\_\_\_ GR/CF  
 CLOTH AREA \_\_\_\_\_ SQ.FT.  
 NO. OF BAGS \_\_\_\_\_  
 A/C RATIO \_\_\_\_\_ :1  
 PROCESS \_\_\_\_\_

- NOTES:
- Inlet size based on 3000 fpm maximum velocity.
  - Standard exhaust connection either right or left of header.
  - Six (6) leg support for model 3115 and all units larger. Center leg at collector centerline.
  - Magnehelic gauge w/ bracket, tubing & fittings.
  - Unless otherwise specified, timers shipped assembled & pre-wired to solenoid enclosure.
  - Drawing dimensions are subject to change without prior notice.

**SLY** INC.  
 TECHNOLOGY FOR A CLEAN ENVIRONMENT  
 8300 Dow Circle  
 Strongsville, OH 44136  
 1-800-334-2957  
 In Ohio (440) 891-3200  
 FAX: (440) 891-3210

STJ-505-2 (A)