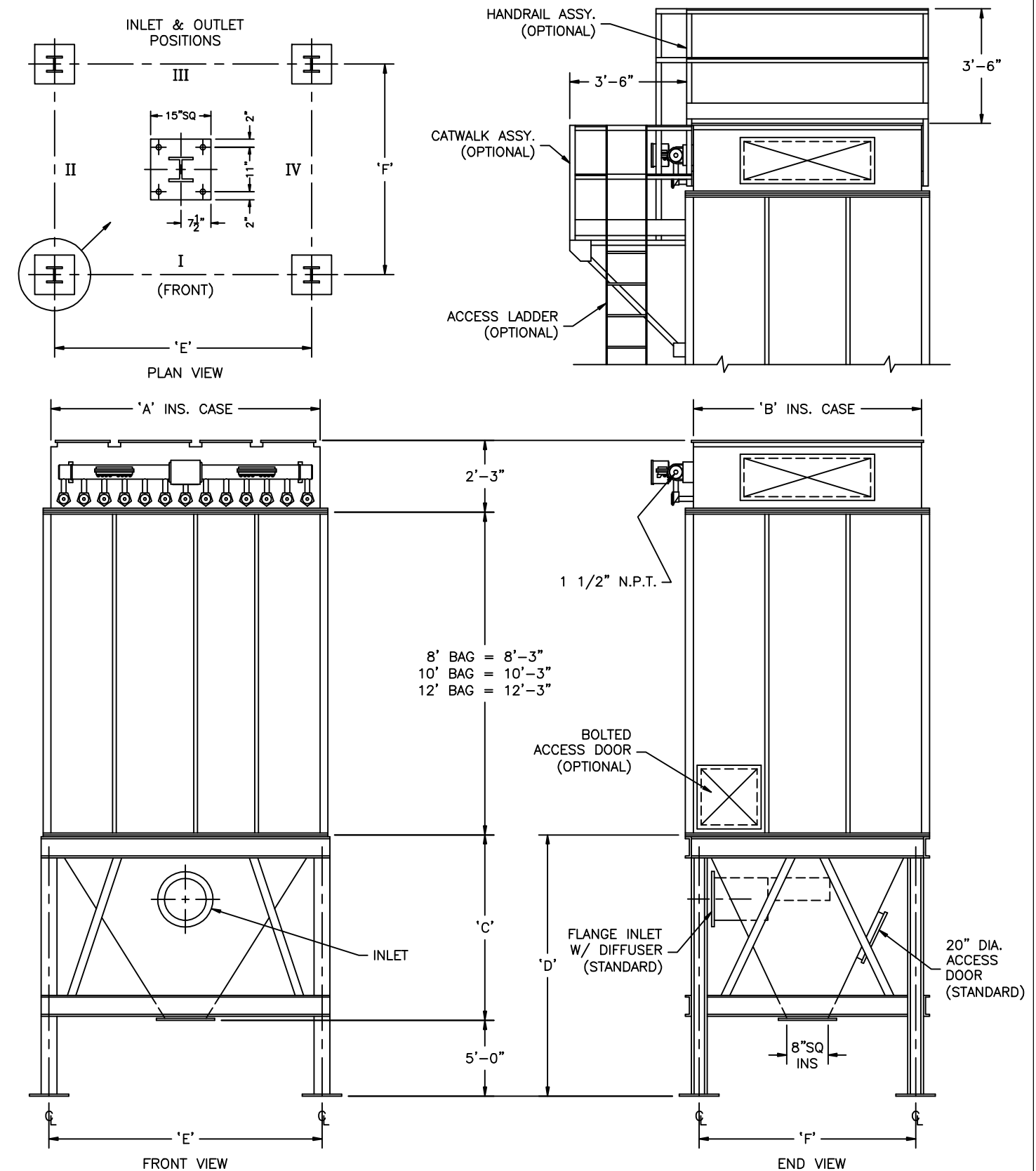


Sly TubeJet Model STJ (TOP BAG REMOVAL)

Model No.	Bag Length (ft.)	Cloth Area (SQ. ft.)	Bag Quantity	Air Usage (SCFM @ 90 psig)*	Hopper Quantity	A	B	C	D	E	F
STJ-1315-	8 10 12	2348 2935 3523	195	31	1	8'-8"	10'-0"	8'-1"	13'-1"	8'-7 13/16"	9'-6 1/16"
STJ-1515-	8 10 12	2710 3387 4064	225	24	1	10'-0"	10'-0"	8'-1"	13'-1"	9'-11 13/16"	9'-6 1/16"
STJ-1715-	8 10 12	3071 3839 4606	255	24	1	11'-4"	10'-0"	9'-3"	14'-3"	11'-3 13/16"	9'-6 1/16"
STJ-1915-	8 10 12	3432 4290 5148	285	24	2	12'-8"	10'-0"	8'-1"	13'-1"	12'-7 13/16"	9'-6 1/16"
STJ-2115-	8 10 12	3793 4742 5690	315	24	2	14'-0"	10'-0"	8'-1"	13'-1"	13'-11 13/16"	9'-6 1/16"
STJ-2315-	8 10 12	4155 5193 6232	345	25	2	15'-4"	10'-0"	8'-1"	13'-1"	15'-3 13/16"	9'-6 1/16"
STJ-2515-	8 10 12	4516 5645 6774	375	25	2	16'-8"	10'-0"	8'-1"	13'-1"	16'-7 13/16"	9'-6 1/16"
STJ-2715-	8 10 12	4877 6097 7316	405	32	2	18'-0"	10'-0"	8'-1"	13'-1"	17'-11 13/16"	9'-6 1/16"
STJ-2915-	8 10 12	5239 6548 7858	435	24	2	19'-4"	10'-0"	8'-1"	13'-1"	19'-3 13/16"	9'-6 1/16"
STJ-3115-	8 10 12	5600 7000 8400	465	24	3	20'-8"	10'-0"	8'-1"	13'-1"	20'-7 13/16"	9'-6 1/16"
STJ-3315-	8 10 12	5961 7451 8942	465	25	3	22'-0"	10'-0"	8'-1"	13'-1"	21'-11 13/16"	9'-6 1/16"
STJ-3515-	8 10 12	6322 7903 9484	525	26	3	23'-4"	10'-0"	8'-1"	13'-1"	23'-3 13/16"	9'-6 1/16"
STJ-3715-	8 10 12	6684 8355 10026	555	28	3	24'-8"	10'-0"	8'-1"	13'-1"	24'-7 13/16"	9'-6 1/16"
STJ-3915-	8 10 12	7045 8806 10568	585	30	3	26'-0"	10'-0"	8'-1"	13'-1"	25'-11 13/16"	9'-6 1/16"
STJ-4115-	8 10 12	7406 9258 11109	615	32	3	27'-4"	10'-0"	8'-1"	13'-1"	27'-3 13/16"	9'-6 1/16"
STJ-4315-	8 10 12	7768 9710 11651	645	33	3	28'-8"	10'-0"	8'-1"	13'-1"	28'-7 13/16"	9'-6 1/16"
STJ-4515-	8 10 12	8129 10161 12193	675	34	3	30'-0"	10'-0"	8'-1"	13'-1"	29'-11 13/16"	9'-6 1/16"
STJ-4715-	8 10 12	8490 10613 12735	705	36	4	31'-4"	10'-0"	8'-1"	13'-1"	31'-3 13/16"	9'-6 1/16"
STJ-4915-	8 10 12	8851 11064 13277	735	37	4	32'-8"	10'-0"	8'-1"	13'-1"	32'-7 13/16"	9'-6 1/16"
STJ-5115-	8 10 12	9213 11516 13819	765	39	4	34'-0"	10'-0"	8'-1"	13'-1"	33'-11 13/16"	9'-6 1/16"



How to Determine Your Model Number

STJ - 15 15 - 8
 Number of rows Number of bags per row Length of bags

* Guideline based on 10 second off time between pulses and 100 millisecond pulse duration ~ may change based on application

NOT FOR CONSTRUCTION

MODEL NO. _____
 VOLUME _____ CFM
 TEMPERATURE _____ °F
 DUST _____
 LOADING _____ GR/CF
 CLOTH AREA _____ SQ.FT.
 NO. OF BAGS _____
 A/C RATIO _____ :1
 PROCESS _____

NOTES:

- Inlet size based on 3000 fpm maximum velocity.
- Standard exhaust connection either right or left of header.
- Six (6) leg support for model 3115 and all units larger. Center leg at collector centerline.
- Magnehelic gauge w/ bracket, tubing & fittings.
- Unless otherwise specified, timers shipped assembled & pre-wired to solenoid enclosure.
- Drawing dimensions are subject to change without prior notice.

SLY INC.

TECHNOLOGY FOR A CLEAN ENVIRONMENT
 8300 Dow Circle, Suite 600
 Strongsville, OH 44136
 1-800-334-2957
 In Ohio (440) 891-3200
 FAX: (440) 891-3210

STJ-505-1 (C)