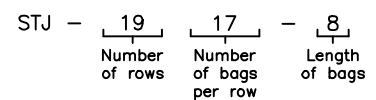


Sly TubeJet Model STJ (TOP BAG REMOVAL)

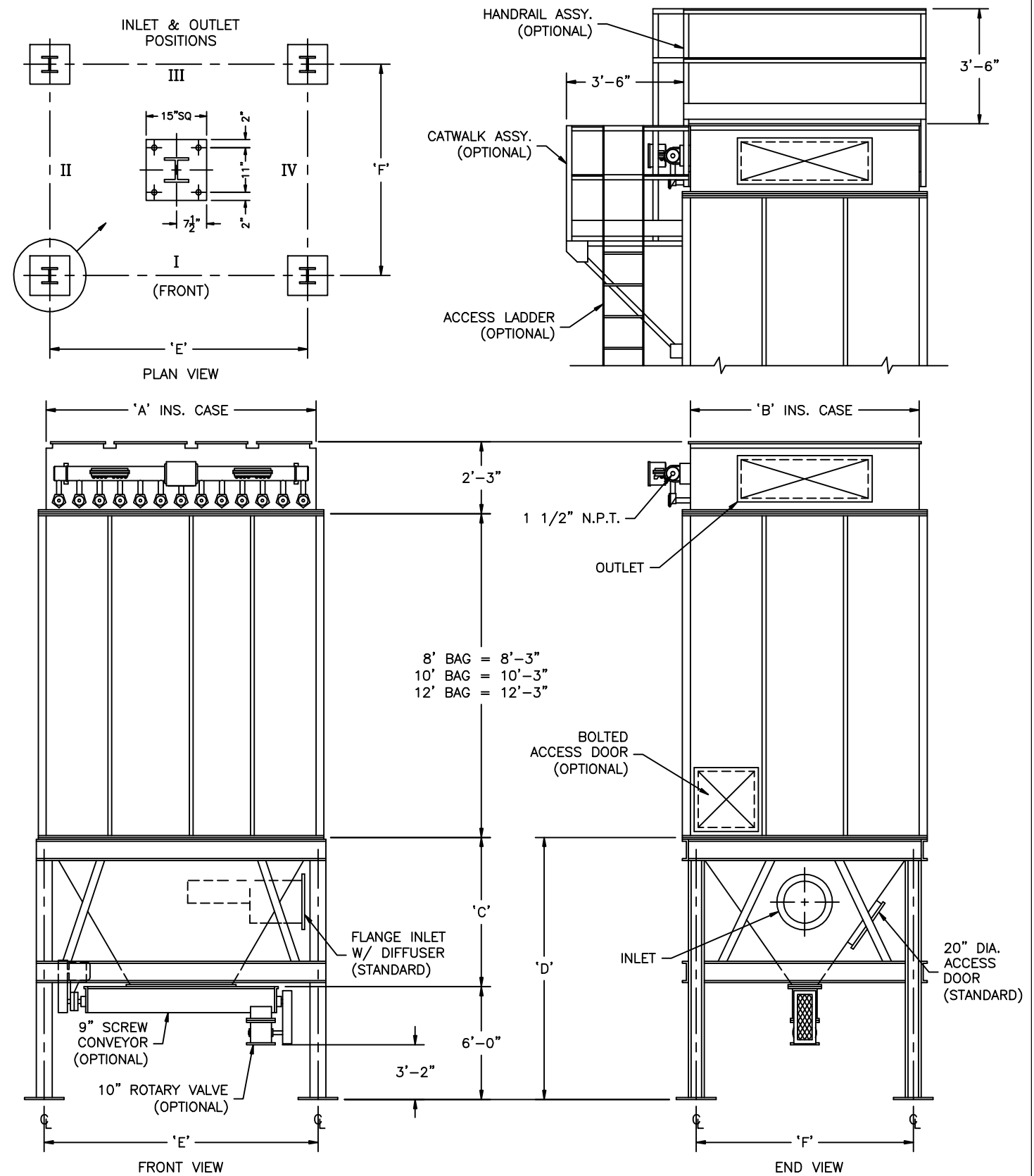
Model No.	Bag Length (ft.)	Cloth Area (SQ. ft.)	Bag Quantity	Air Usage (SCFM @ 90 psig)*	A	B	C	D	E	F
STJ-1717-	8 10 12	2799 3499 4199	289	24	11'-4"	11'-4"	9'-3"	15'-3"	11'-3 13/16"	10'-10 1/16"
STJ-1917-	8 10 12	3129 3911 4693	323	24	12'-8"	11'-4"	9'-3"	15'-3"	12'-7 13/16"	10'-10 1/16"
STJ-2117-	8 10 12	3458 4323 5187	357	24	14'-0"	11'-4"	9'-3"	15'-3"	13'-11 13/16"	10'-10 1/16"
STJ-2317-	8 10 12	3787 4734 5681	391	25	15'-4"	11'-4"	9'-3"	15'-3"	15'-3 13/16"	10'-10 1/16"
STJ-2517-	8 10 12	4117 5146 6175	425	25	16'-8"	11'-4"	9'-3"	15'-3"	16'-7 13/16"	10'-10 1/16"
STJ-2717-	8 10 12	4446 5558 6669	459	32	18'-0"	11'-4"	9'-3"	15'-3"	17'-11 13/16"	10'-10 1/16"
STJ-2917-	8 10 12	4775 5969 7163	493	24	19'-4"	11'-4"	9'-3"	15'-3"	19'-3 13/16"	10'-10 1/16"
STJ-3117-	8 10 12	5105 6381 7657	527	24	20'-8"	11'-4"	9'-3"	15'-3"	20'-7 13/16"	10'-10 1/16"
STJ-3317-	8 10 12	5434 6793 8151	561	25	22'-0"	11'-4"	9'-3"	15'-3"	21'-11 13/16"	10'-10 1/16"
STJ-3517-	8 10 12	5764 7204 8645	595	26	23'-4"	11'-4"	9'-3"	15'-3"	23'-3 13/16"	10'-10 1/16"
STJ-3717-	8 10 12	6093 7616 9139	629	28	24'-8"	11'-4"	9'-3"	15'-3"	24'-7 13/16"	10'-10 1/16"
STJ-3917-	8 10 12	6422 8028 9633	663	30	26'-0"	11'-4"	9'-3"	15'-3"	25'-11 13/16"	10'-10 1/16"
STJ-4117-	8 10 12	6752 8439 10127	697	32	27'-4"	11'-4"	9'-3"	15'-3"	27'-3 13/16"	10'-10 1/16"
STJ-4317-	8 10 12	7081 8851 10621	731	33	28'-8"	11'-4"	9'-3"	15'-3"	28'-7 13/16"	10'-10 1/16"
STJ-4517-	8 10 12	7410 9263 11115	765	34	30'-0"	11'-4"	9'-3"	15'-3"	29'-11 13/16"	10'-10 1/16"
STJ-4717-	8 10 12	7740 9674 11609	799	36	31'-4"	11'-4"	9'-3"	15'-3"	31'-3 13/16"	10'-10 1/16"
STJ-4917-	8 10 12	8069 10086 12103	833	37	32'-8"	11'-4"	9'-3"	15'-3"	32'-7 13/16"	10'-10 1/16"
STJ-5117-	8 10 12	8398 10498 12597	867	39	34'-0"	11'-4"	9'-3"	15'-3"	33'-11 13/16"	10'-10 1/16"
STJ-5317-	8 10 12	8728 10910 13091	901	40	35'-4"	11'-4"	9'-3"	15'-3"	35'-3 13/16"	10'-10 1/16"
STJ-5517-	8 10 12	9057 11321 13585	935	41	36'-8"	11'-4"	9'-3"	15'-3"	36'-7 13/16"	10'-10 1/16"

How to Determine Your Model Number



* Guideline based on 10 second off time between pulses and 100 millisecond pulse duration ~ may change based on application

NOT FOR CONSTRUCTION



MODEL NO. _____
 VOLUME _____ CFM
 TEMPERATURE _____ °F
 DUST _____
 LOADING _____ GR/CF
 CLOTH AREA _____ SQ.FT.
 NO. OF BAGS _____
 A/C RATIO _____ :1
 PROCESS _____

- NOTES:
- Inlet size based on 3000 fpm maximum velocity.
 - Standard exhaust connection either right or left of header.
 - Six (6) leg support for model 3117 and all units larger. Center leg at collector centerline.
 - Magnehetic gauge w/ bracket, tubing & fittings.
 - Unless otherwise specified, timers shipped assembled & pre-wired to solenoid enclosure.
 - Drawing dimensions are subject to change without prior notice.

SLY INC.
 TECHNOLOGY FOR A CLEAN ENVIRONMENT
 8300 Dow Circle, Suite 600
 Strongsville, OH 44136
 1-800-334-2957
 In Ohio (440) 891-3200
 FAX: (440) 891-3210

STJ-503-3(4.5)