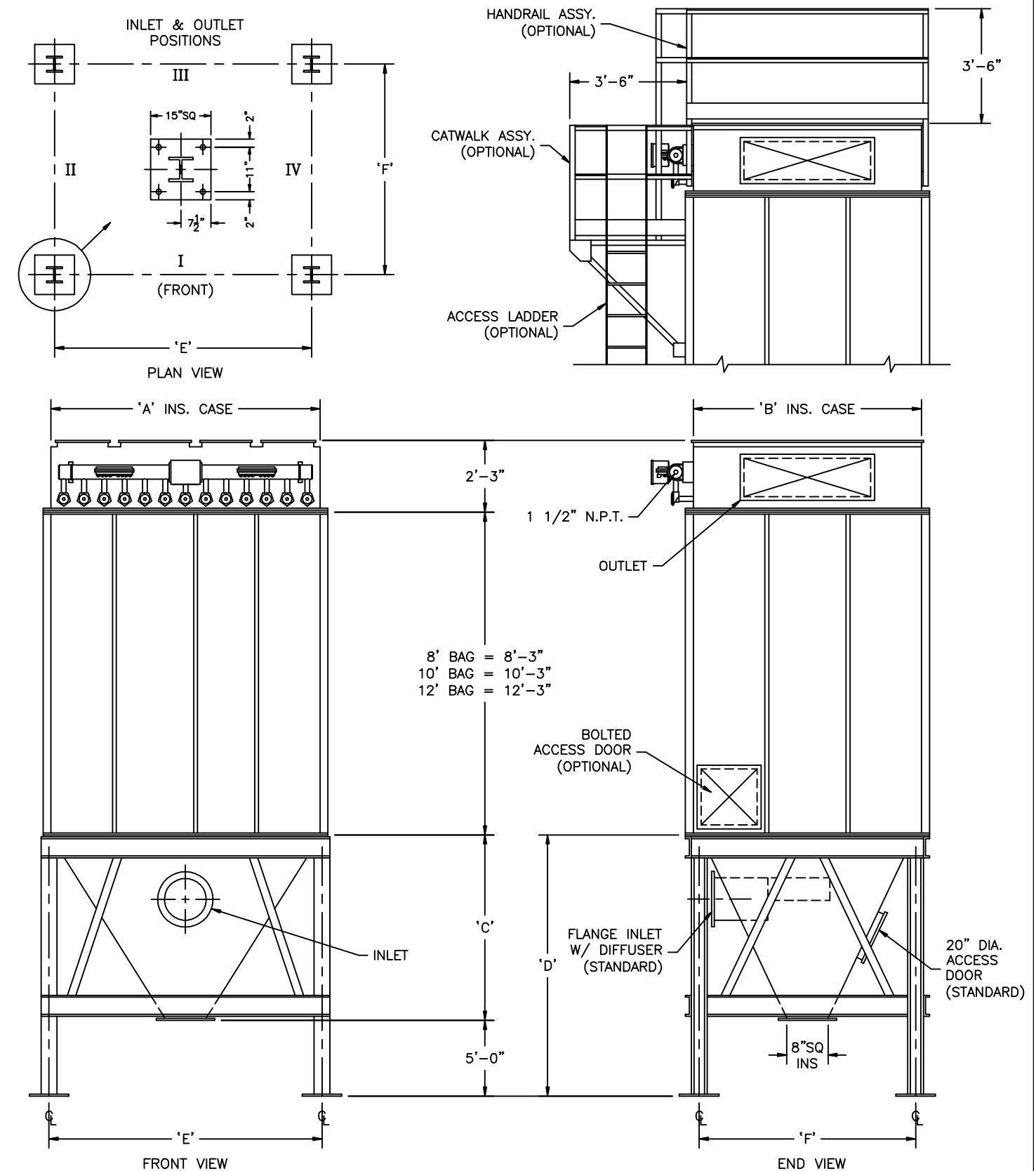


Sly TubeJet Model STJ (TOP BAG REMOVAL)

| Model No. | Bag Length (ft.) | Cloth Area (SQ. ft.) | Bag Quantity | Air Usage (SCFM @ 90 psig)* | Hopper Quantity | A | B | C | D | E | F |
|-----------|------------------|-------------------------|--------------|-----------------------------|-----------------|--------|--------|--------|--------|---------------|--------------|
| STJ-1717- | 8 10 12 | 3480 4350 5221 | 289 | 24 | 1 | 11'-4" | 11'-4" | 9'-3" | 14'-3" | 11'-3 13/16" | 10'-10 1/16" |
| STJ-1917- | 8 10 12 | 3890 4862 5835 | 323 | 24 | 1 | 12'-8" | 11'-4" | 10'-5" | 15'-5" | 12'-7 13/16" | 10'-10 1/16" |
| STJ-2117- | 8 10 12 | 4299 5374 6449 | 357 | 24 | 2 | 14'-0" | 11'-4" | 9'-3" | 14'-3" | 13'-11 13/16" | 10'-10 1/16" |
| STJ-2317- | 8 10 12 | 4709 5886 7063 | 391 | 25 | 2 | 15'-4" | 11'-4" | 9'-3" | 14'-3" | 15'-3 13/16" | 10'-10 1/16" |
| STJ-2517- | 8 10 12 | 5118 6398 7677 | 425 | 25 | 2 | 16'-8" | 11'-4" | 9'-3" | 14'-3" | 16'-7 13/16" | 10'-10 1/16" |
| STJ-2717- | 8 10 12 | 5528 6910 8291 | 459 | 32 | 2 | 18'-0" | 11'-4" | 9'-3" | 14'-3" | 17'-11 13/16" | 10'-10 1/16" |
| STJ-2917- | 8 10 12 | 5937 7421 8906 | 493 | 24 | 2 | 19'-4" | 11'-4" | 9'-3" | 14'-3" | 19'-3 13/16" | 10'-10 1/16" |
| STJ-3117- | 8 10 12 | 6347 7933 9520 | 527 | 24 | 2 | 20'-8" | 11'-4" | 9'-3" | 14'-3" | 20'-7 13/16" | 10'-10 1/16" |
| STJ-3317- | 8 10 12 | 6756 8445 10134 | 561 | 25 | 2 | 22'-0" | 11'-4" | 9'-3" | 14'-3" | 21'-11 13/16" | 10'-10 1/16" |
| STJ-3517- | 8 10 12 | 7165 8957 10748 | 595 | 26 | 3 | 23'-4" | 11'-4" | 9'-3" | 14'-3" | 23'-3 13/16" | 10'-10 1/16" |
| STJ-3717- | 8 10 12 | 7575 9469 11362 | 629 | 28 | 3 | 24'-8" | 11'-4" | 9'-3" | 14'-3" | 24'-7 13/16" | 10'-10 1/16" |
| STJ-3917- | 8 10 12 | 7984 9980 11977 | 663 | 30 | 3 | 26'-0" | 11'-4" | 9'-3" | 14'-3" | 25'-11 13/16" | 10'-10 1/16" |
| STJ-4117- | 8 10 12 | 8394 10492 12591 | 697 | 32 | 3 | 27'-4" | 11'-4" | 9'-3" | 14'-3" | 27'-3 13/16" | 10'-10 1/16" |
| STJ-4317- | 8 10 12 | 8803 11004 13205 | 731 | 33 | 3 | 28'-8" | 11'-4" | 9'-3" | 14'-3" | 28'-7 13/16" | 10'-10 1/16" |
| STJ-4517- | 8 10 12 | 9213 11516 13819 | 765 | 34 | 3 | 30'-0" | 11'-4" | 9'-3" | 14'-3" | 29'-11 13/16" | 10'-10 1/16" |
| STJ-4717- | 8 10 12 | 9622 12028 14433 | 799 | 36 | 3 | 31'-4" | 11'-4" | 9'-3" | 14'-3" | 31'-3 13/16" | 10'-10 1/16" |
| STJ-4917- | 8 10 12 | 10032 12540 15047 | 833 | 37 | 3 | 32'-8" | 11'-4" | 9'-3" | 14'-3" | 32'-7 13/16" | 10'-10 1/16" |
| STJ-5117- | 8 10 12 | 10441 13051 15662 | 867 | 39 | 3 | 34'-0" | 11'-4" | 9'-3" | 14'-3" | 33'-11 13/16" | 10'-10 1/16" |
| STJ-5317- | 8 10 12 | 10851 13563 16276 | 901 | 40 | 4 | 35'-4" | 11'-4" | 9'-3" | 14'-3" | 35'-3 13/16" | 10'-10 1/16" |
| STJ-5517- | 8 10 12 | 11260 14075 16890 | 935 | 41 | 4 | 36'-8" | 11'-4" | 9'-3" | 14'-3" | 36'-7 13/16" | 10'-10 1/16" |



How to Determine Your Model Number

STJ - 19 17 - 8
 Number of rows Number of bags per row Length of bags

* Guideline based on 10 second off time between pulses and 100 millisecond pulse duration ~ may change based on application

NOT FOR CONSTRUCTION

MODEL NO. _____
 VOLUME _____ CFM
 TEMPERATURE _____ °F
 DUST _____
 LOADING _____ GR/CF
 CLOTH AREA _____ SQ.FT.
 NO. OF BAGS _____
 A/C RATIO _____ :1
 PROCESS _____

- NOTES:**
- Inlet size based on 3000 fpm maximum velocity.
 - Standard exhaust connection either right or left of header.
 - Six (6) leg support for model 3117 and all units larger. Center leg at collector centerline.
 - Magnehetic gauge w/ bracket, tubing & fittings.
 - Unless otherwise specified, timers shipped assembled & pre-wired to solenoid enclosure.
 - Drawing dimensions are subject to change without prior notice.

SLY INC.

TECHNOLOGY FOR A CLEAN ENVIROMENT
 8300 Dow Circle, Suite 600
 Strongsville, OH 44136
 1-800-334-2957
 In Ohio (440) 891-3200
 FAX: (440) 891-3210

STJ-503-1 (C)