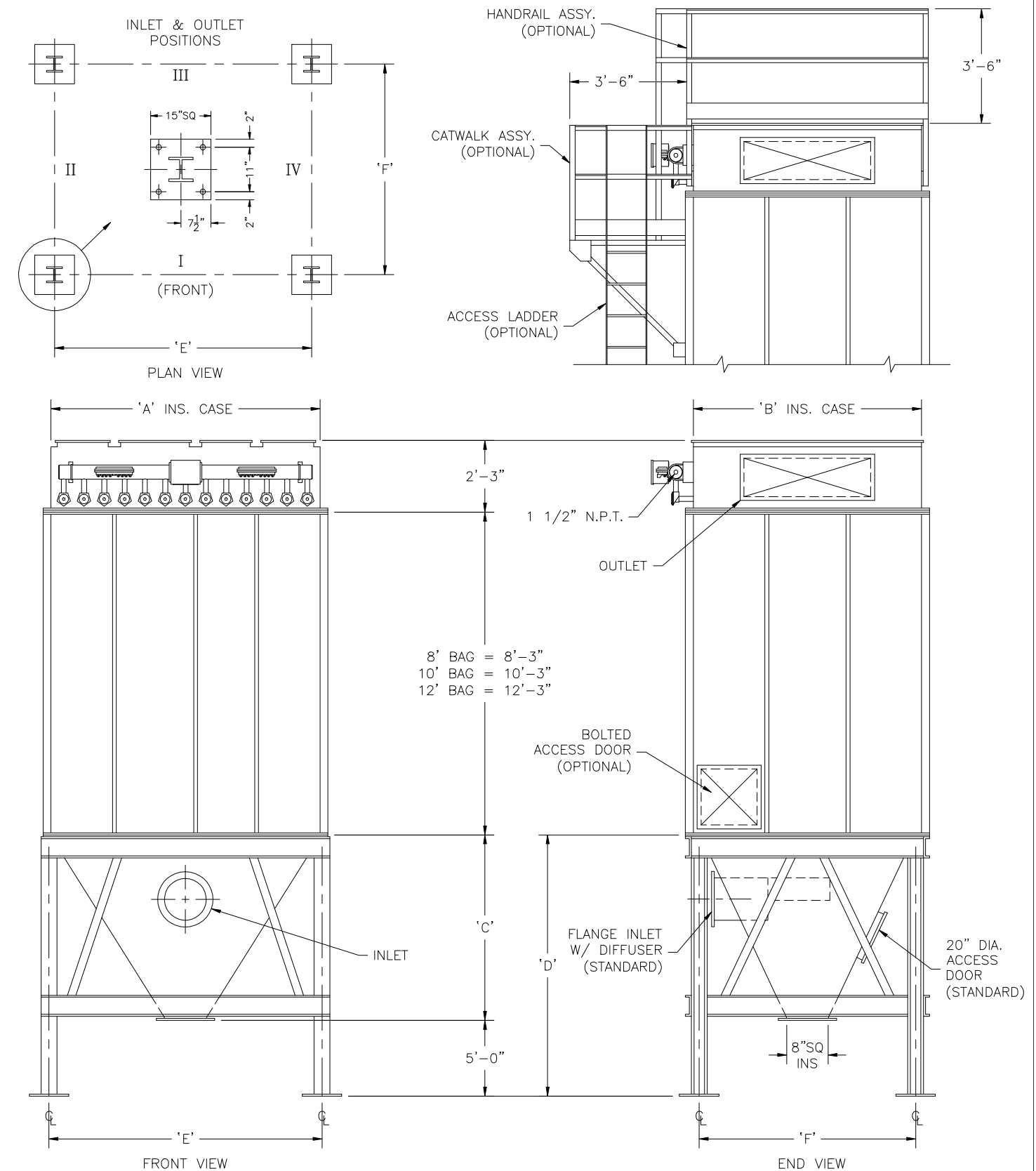


Sly TubeJet Model STJ (TOP BAG REMOVAL)

Model No.	Bag Length (ft.)	Cloth Area (SQ. ft.)	Bag Quantity	Air Usage (SCFM @ 90 psig)*	Hopper Quantity	A	B	C	D	E	F
STJ-1717-	8 10 12	3468 4335 5202	289	24	1	11'-4"	11'-4"	9'-3"	14'-3"	11'-3 13/16"	10'-10 1/16"
STJ-1917-	8 10 12	3876 4845 5814	323	24	1	12'-8"	11'-4"	10'-5"	15'-5"	12'-7 13/16"	10'-10 1/16"
STJ-2117-	8 10 12	4284 5355 6426	357	24	2	14'-0"	11'-4"	9'-3"	14'-3"	13'-11 13/16"	10'-10 1/16"
STJ-2317-	8 10 12	4692 5865 7038	391	25	2	15'-4"	11'-4"	9'-3"	14'-3"	15'-3 13/16"	10'-10 1/16"
STJ-2517-	8 10 12	5100 6375 7650	425	25	2	16'-8"	11'-4"	9'-3"	14'-3"	16'-7 13/16"	10'-10 1/16"
STJ-2717-	8 10 12	5508 6885 8262	459	32	2	18'-0"	11'-4"	9'-3"	14'-3"	17'-11 13/16"	10'-10 1/16"
STJ-2917-	8 10 12	5916 7395 8874	493	24	2	19'-4"	11'-4"	9'-3"	14'-3"	19'-3 13/16"	10'-10 1/16"
STJ-3117-	8 10 12	6324 7905 9486	527	24	2	20'-8"	11'-4"	9'-3"	14'-3"	20'-7 13/16"	10'-10 1/16"
STJ-3317-	8 10 12	6732 8415 10098	561	25	2	22'-0"	11'-4"	9'-3"	14'-3"	21'-11 13/16"	10'-10 1/16"
STJ-3517-	8 10 12	7140 8925 10710	595	26	3	23'-4"	11'-4"	9'-3"	14'-3"	23'-3 13/16"	10'-10 1/16"
STJ-3717-	8 10 12	7548 9435 11322	629	28	3	24'-8"	11'-4"	9'-3"	14'-3"	24'-7 13/16"	10'-10 1/16"
STJ-3917-	8 10 12	7965 9945 11934	663	30	3	26'-0"	11'-4"	9'-3"	14'-3"	25'-11 13/16"	10'-10 1/16"
STJ-4117-	8 10 12	8364 10455 12546	697	32	3	27'-4"	11'-4"	9'-3"	14'-3"	27'-3 13/16"	10'-10 1/16"
STJ-4317-	8 10 12	8772 10995 13158	731	33	3	28'-8"	11'-4"	9'-3"	14'-3"	28'-7 13/16"	10'-10 1/16"
STJ-4517-	8 10 12	9180 11475 13770	765	34	3	30'-0"	11'-4"	9'-3"	14'-3"	29'-11 13/16"	10'-10 1/16"
STJ-4717-	8 10 12	9588 11985 14382	799	36	3	31'-4"	11'-4"	9'-3"	14'-3"	31'-3 13/16"	10'-10 1/16"
STJ-4917-	8 10 12	9996 12495 14994	833	37	3	32'-8"	11'-4"	9'-3"	14'-3"	32'-7 13/16"	10'-10 1/16"
STJ-5117-	8 10 12	10404 13005 15606	867	39	3	34'-0"	11'-4"	9'-3"	14'-3"	33'-11 13/16"	10'-10 1/16"
STJ-5317-	8 10 12	10812 13515 16218	901	40	4	35'-4"	11'-4"	9'-3"	14'-3"	35'-3 13/16"	10'-10 1/16"
STJ-5517-	8 10 12	11220 14025 16830	935	41	4	36'-8"	11'-4"	9'-3"	14'-3"	36'-7 13/16"	10'-10 1/16"



How to Determine Your Model Number

STJ - 19 17 - 8
 Number of rows Number of bags per row Length of bags

* Guideline based on 10 second off time between pulses and 100 millisecond pulse duration ~ may change based on application

NOT FOR CONSTRUCTION

MODEL NO. _____
 VOLUME _____ CFM
 TEMPERATURE _____ °F
 DUST _____
 LOADING _____ GR/CF
 CLOTH AREA _____ SQ.FT.
 NO. OF BAGS _____
 A/C RATIO _____ :1
 PROCESS _____

- NOTES:
- Inlet size based on 3000 fpm maximum velocity.
 - Standard exhaust connection either right or left of header.
 - Six (6) leg support for model 3117 and all units larger. Center leg at collector centerline.
 - Magnehetic gauge w/ bracket, tubing & fittings.
 - Unless otherwise specified, timers shipped assembled & pre-wired to solenoid enclosure.
 - Drawing dimensions are subject to change without prior notice.

SLY INC.

TECHNOLOGY FOR A CLEAN ENVIRONMENT
 8300 Dow Circle
 Strongsville, OH 44136
 1-800-334-2957
 In Ohio (440) 891-3200
 FAX: (440) 891-3210

STJ-503-1 (B)