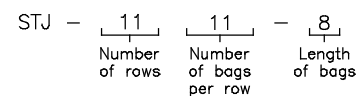


Sly TubeJet Model STJ (TOP BAG REMOVAL)

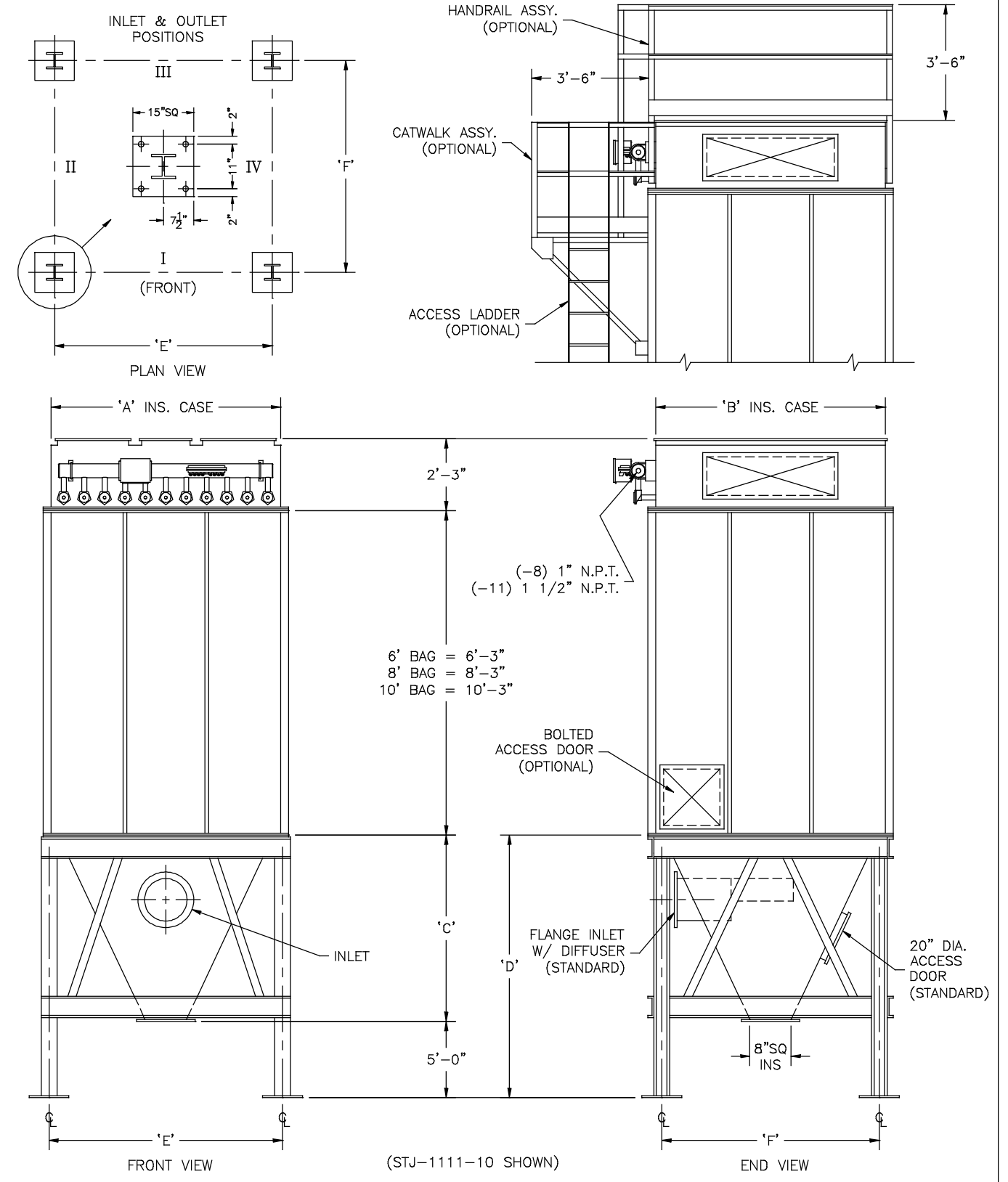
Model No.	Bag Length (ft)	Cloth Area (SQ. ft.)	Bag Quantity	Air Usage (SCFM @ 90 psig)*	Hopper Quantity	A	B	C	D	E	F
STJ-128-	6 8 10	867 1156 1445	96	13	1	8'-0"	5'-4"	6'-5"	11'-5"	7'-11 13/16"	4'-10 1/16"
STJ-1011-	6 8 10	994 1325 1656	110	24	1	6'-8"	7'-4"	5'-10"	10'-10"	6'-7 13/16"	6'-10 1/16"
STJ-1111-	6 8 10	1093 1457 1821	121	25	1	7'-4"	7'-4"	5'-10"	10'-10"	7'-3 13/16"	6'-10 1/16"
STJ-1311-	6 8 10	1292 1722 2153	143	31	1	8'-8"	7'-4"	7'-0"	12'-0"	8'-7 13/16"	6'-10 1/16"
STJ-1511-	6 8 10	1490 1987 2484	165	24	1	10'-0"	7'-4"	8'-1"	13'-1"	9'-11 13/16"	6'-10 1/16"
STJ-1711-	8 10	2252 2815	187	24	1	11'-4"	7'-4"	9'-3"	14'-3"	11'-3 13/16"	6'-10 1/16"
STJ-1911-	8 10	2517 3146	209	24	1	12'-8"	7'-4"	10'-5"	15'-5"	12'-7 13/16"	6'-10 1/16"
STJ-2111-	8 10	2782 3477	231	24	2	14'-0"	7'-4"	11'-7"	16'-7"	13'-11 13/16"	6'-10 1/16"
STJ-2311-	8 10	3047 3809	253	25	2	15'-4"	7'-4"	6'-5"	11'-5"	15'-3 13/16"	6'-10 1/16"
STJ-2511-	8 10	3312 4140	275	25	2	16'-8"	7'-4"	7'-0"	12'-0"	16'-7 3/16"	6'-10 1/16"
STJ-2711-	8 10	3577 4471	297	32	2	18'-0"	7'-4"	7'-6"	12'-6"	17'-11 13/16"	6'-10 1/16"
STJ-2911-	8 10	3842 4802	319	24	2	19'-4"	7'-4"	8'-1"	13'-1"	19'-3 13/16"	6'-10 1/16"
STJ-3111-	8 10	4107 5133	341	24	2	20'-8"	7'-4"	8'-8"	13'-8"	20'-7 13/16"	6'-10 1/16"
STJ-3311-	8 10	4372 5464	363	24	2	22'-0"	7'-4"	9'-3"	14'-3"	21'-11 13/16"	6'-10 1/16"
STJ-3511-	8 10	4636 5796	385	26	3	23'-4"	7'-4"	9'-10"	14'-10"	23'-3 13/16"	6'-10 1/16"
STJ-3711-	8 10	4901 6127	407	28	3	24'-8"	7'-4"	10'-5"	15'-5"	24'-7 13/16"	6'-10 1/16"
STJ-3911-	8 10	5166 6458	429	30	3	26'-0"	7'-4"	11'-0"	16'-0"	25'-11 13/16"	6'-10 1/16"
STJ-4111-	8 10	5431 6789	451	32	3	27'-4"	7'-4"	11'-7"	16'-7"	27'-3 13/16"	6'-10 1/16"

How to Determine Your Model Number



* Guideline based on 10 second off time between pulses and 100 millisecond pulse duration ~ may change based on application

NOT FOR CONSTRUCTION



MODEL NO. _____
 VOLUME _____ CFM
 TEMPERATURE _____ °F
 DUST _____
 LOADING _____ GR/CF
 CLOTH AREA _____ SQ.FT.
 NO. OF BAGS _____
 A/C RATIO _____ :1
 PROCESS _____

NOTES:
 - Inlet size based on 3000 fpm maximum velocity.
 - Standard exhaust connection either right or left of header.
 - Size STJ-2311 and above use multiple pyramid hoppers.
 - Six (6) leg support for model 2311 and all units larger. Center leg at collector centerline.
 - Magnehelic gauge w/ bracket, tubing & fittings.
 - Unless otherwise specified, timers shipped assembled & pre-wired to solenoid enclosure.
 - Drawing dimensions are subject to change without prior notice.

SLY INC.
 TECHNOLOGY FOR A CLEAN ENVIRONMENT
 8300 Dow Circle, Suite 600
 Strongsville, OH 44136
 1-800-334-2957
 In Ohio (440) 891-3200
 FAX: (440) 891-3210
STJ-501 (D)