

Sly TubeJet Model STJ (TOP BAG REMOVAL)

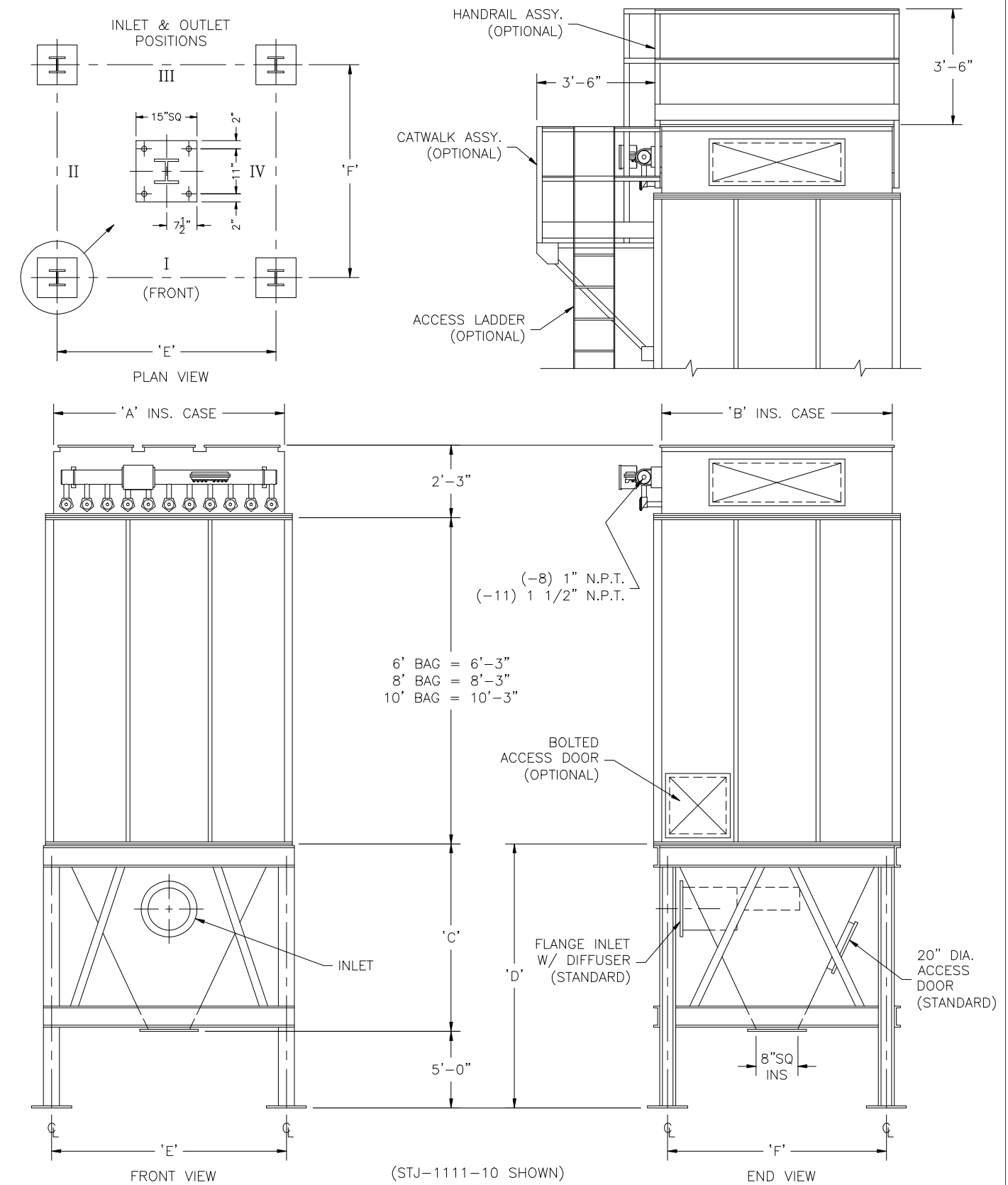
Model No.	Bag Length (ft)	Cloth Area (SQ. ft.)	Bag Quantity	Air Usage (SCFM @ 90 psig)*	Hopper Quantity	A	B	C	D	E	F
STJ-128-	6 8 10	864 1152 1440	96	13	1	8'-0"	5'-4"	6'-5"	11'-5"	7'-11 13/16"	4'-10 1/16"
STJ-1011-	6 8 10	990 1320 1650	110	24	1	6'-8"	7'-4"	5'-10"	10'-10"	6'-7 13/16"	6'-10 1/16"
STJ-1111-	6 8 10	1089 1452 1815	121	25	1	7'-4"	7'-4"	5'-10"	10'-10"	7'-3 13/16"	6'-10 1/16"
STJ-1311-	6 8 10	1287 1716 2145	143	31	1	8'-8"	7'-4"	6'-10"	11'-10"	8'-7 13/16"	6'-10 1/16"
STJ-1511-	6 8 10	1485 1980 2475	165	24	2	10'-0"	7'-4"	5'-10"	10'-10"	9'-11 13/16"	6'-10 1/16"
STJ-1711-	6 8 10	1683 2244 2805	187	24	2	11'-4"	7'-4"	5'-10"	10'-10"	11'-3 13/16"	6'-10 1/16"
STJ-1911-	6 8 10	1881 2508 3135	209	24	2	12'-8"	7'-4"	5'-10"	10'-10"	12'-7 13/16"	6'-10 1/16"
STJ-2111-	6 8 10	2079 2772 3465	231	24	2	14'-0"	7'-4"	5'-10"	10'-10"	13'-11 13/16"	6'-10 1/16"
STJ-2311-	6 8 10	2277 3036 3795	253	25	3	15'-4"	7'-4"	5'-10"	10'-10"	15'-3 13/16"	6'-10 1/16"
STJ-2511-	6 8 10	2475 3300 4125	275	25	3	16'-8"	7'-4"	5'-10"	10'-10"	16'-7 3/16"	6'-10 1/16"
STJ-2711-	6 8 10	2673 3564 4455	297	32	3	18'-0"	7'-4"	5'-10"	10'-10"	17'-11 13/16"	6'-10 1/16"
STJ-2911-	6 8 10	2871 3828 4785	319	24	3	19'-4"	7'-4"	5'-10"	10'-10"	19'-3 13/16"	6'-10 1/16"
STJ-3111-	6 8 10	3069 4092 5115	341	24	3	20'-8"	7'-4"	5'-10"	10'-10"	20'-7 13/16"	6'-10 1/16"
STJ-3311-	6 8 10	3267 4356 5445	363	24	4	22'-0"	7'-4"	5'-10"	10'-10"	21'-11 13/16"	6'-10 1/16"
STJ-3511-	6 8 10	3465 4620 5775	385	26	4	23'-4"	7'-4"	5'-10"	10'-10"	23'-3 13/16"	6'-10 1/16"
STJ-3711-	6 8 10	3663 4884 6105	407	28	4	24'-8"	7'-4"	5'-10"	10'-10"	24'-7 13/16"	6'-10 1/16"
STJ-3911-	6 8 10	3861 5148 6435	429	30	4	26'-0"	7'-4"	5'-10"	10'-10"	25'-11 13/16"	6'-10 1/16"
STJ-4111-	6 8 10	4059 5412 6765	451	32	4	27'-4"	7'-4"	5'-10"	10'-10"	27'-3 13/16"	6'-10 1/16"

How to Determine Your Model Number

STJ - 11 - 11 - 8
 Number of rows Number of bags per row Length of bags

* Guideline based on 10 second off time between pulses and 100 millisecond pulse duration ~ may change based on application

NOT FOR CONSTRUCTION



MODEL NO. _____
 VOLUME _____ CFM
 TEMPERATURE _____ °F
 DUST _____
 LOADING _____ GR/CF
 CLOTH AREA _____ SQ.FT.
 NO. OF BAGS _____
 A/C RATIO _____ :1
 PROCESS _____

- NOTES:
- Inlet size based on 3000 fpm maximum velocity.
 - Standard exhaust connection either right or left of header.
 - Standard trough hopper has same depth as pyramidal hopper.
 - Six (6) leg support for model 3111 and all units larger. Center leg at collector centerline.
 - Magnehelic gauge w/ bracket, tubing & fittings.
 - Unless otherwise specified, timers shipped assembled & pre-wired to solenoid enclosure.
 - Drawing dimensions are subject to change without prior notice.

SLY INC.
 TECHNOLOGY FOR A CLEAN ENVIRONMENT

8300 Dow Circle
 Strongsville, OH 44136
 1-800-334-2957
 In Ohio (440) 891-3200
 FAX: (440) 891-3210

STJ-501 (B)