

# Sly TubeJet Model STJ (4.5)

## (TOP BAG REMOVAL)

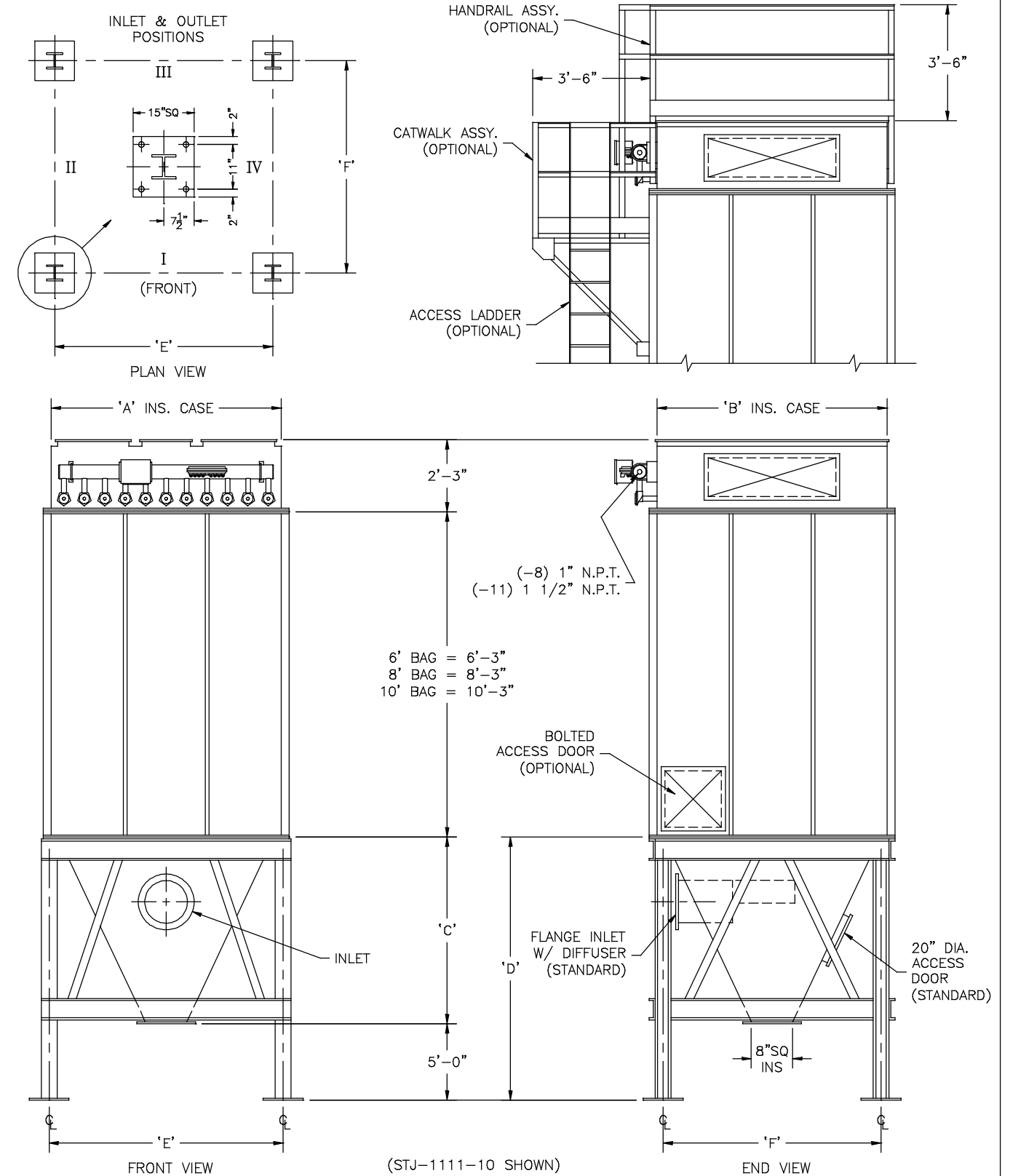
Model No.	Bag Length (ft)	Cloth Area (SQ. ft.)	Bag Quantity	Air Usage (SCFM @ 90 psig)*	Hopper Quantity	A	B	C	D	E	F
STJ-128-	6 8 10	697 930 1162	96	13	1	8'-0"	5'-4"	6'-5"	11'-5"	7'-11 13/16"	4'-10 1/16"
STJ-1011-	6 8 10	799 1066 1332	110	24	1	6'-8"	7'-4"	5'-10"	10'-10"	6'-7 13/16"	6'-10 1/16"
STJ-1111-	6 8 10	879 1172 1465	121	25	1	7'-4"	7'-4"	5'-10"	10'-10"	7'-3 13/16"	6'-10 1/16"
STJ-1311-	6 8 10	1039 1385 1731	143	31	1	8'-8"	7'-4"	7'-0"	12'-0"	8'-7 13/16"	6'-10 1/16"
STJ-1511-	6 8 10	1199 1598 1998	165	24	1	10'-0"	7'-4"	8'-1"	13'-1"	9'-11 13/16"	6'-10 1/16"
STJ-1711-	8 10	1811 2264	187	24	1	11'-4"	7'-4"	9'-3"	14'-3"	11'-3 13/16"	6'-10 1/16"
STJ-1911-	8 10	2024 2531	209	24	1	12'-8"	7'-4"	10'-5"	15'-5"	12'-7 13/16"	6'-10 1/16"
STJ-2111-	8 10	2238 2797	231	24	2	14'-0"	7'-4"	11'-7"	16'-7"	13'-11 13/16"	6'-10 1/16"
STJ-2311-	8 10	2451 3063	253	25	2	15'-4"	7'-4"	6'-5"	11'-5"	15'-3 13/16"	6'-10 1/16"
STJ-2511-	8 10	2664 3330	275	25	2	16'-8"	7'-4"	7'-0"	12'-0"	16'-7 3/16"	6'-10 1/16"
STJ-2711-	8 10	2877 3596	297	32	2	18'-0"	7'-4"	7'-6"	12'-6"	17'-11 13/16"	6'-10 1/16"
STJ-2911-	8 10	3090 3863	319	24	2	19'-4"	7'-4"	8'-1"	13'-1"	19'-3 13/16"	6'-10 1/16"
STJ-3111-	8 10	3303 4129	341	24	2	20'-8"	7'-4"	8'-8"	13'-8"	20'-7 13/16"	6'-10 1/16"
STJ-3311-	8 10	3516 4395	363	24	2	22'-0"	7'-4"	9'-3"	14'-3"	21'-11 13/16"	6'-10 1/16"
STJ-3511-	8 10	3729 4662	385	26	3	23'-4"	7'-4"	9'-10"	14'-10"	23'-3 13/16"	6'-10 1/16"
STJ-3711-	8 10	3942 4928	407	28	3	24'-8"	7'-4"	10'-5"	15'-5"	24'-7 13/16"	6'-10 1/16"
STJ-3911-	8 10	4156 5194	429	30	3	26'-0"	7'-4"	11'-0"	16'-0"	25'-11 13/16"	6'-10 1/16"
STJ-4111-	8 10	4369 5461	451	32	3	27'-4"	7'-4"	11'-7"	16'-7"	27'-3 13/16"	6'-10 1/16"

How to Determine Your Model Number

STJ - 11 - 11 - 8 - (4.5)  
 Number of rows    Number of bags per row    Length of bags    Bag diameter

\* Guideline based on 10 second off time between pulses and 100 millisecond pulse duration ~ may change based on application

NOT FOR CONSTRUCTION



MODEL NO. \_\_\_\_\_  
 VOLUME \_\_\_\_\_ CFM  
 TEMPERATURE \_\_\_\_\_ °F  
 DUST \_\_\_\_\_  
 LOADING \_\_\_\_\_ GR/CF  
 CLOTH AREA \_\_\_\_\_ SQ.FT.  
 NO. OF BAGS \_\_\_\_\_  
 A/C RATIO \_\_\_\_\_ :1  
 PROCESS \_\_\_\_\_

NOTES:  
 - Inlet size based on 3000 fpm maximum velocity.  
 - Standard exhaust connection either right or left of header.  
 - Six (6) leg support for model 2311 and all units larger. Center leg at collector centerline.  
 - Magnehelic gauge w/ bracket, tubing & fittings.  
 - Unless otherwise specified, timers shipped assembled & pre-wired to solenoid enclosure.  
 - Drawing dimensions are subject to change without prior notice.

**SLY** INC.  
 TECHNOLOGY FOR A CLEAN ENVIRONMENT  
 8300 Dow Circle, Suite 600  
 Strongsville, OH 44136  
 1-800-334-2957  
 In Ohio (440) 891-3200  
 FAX: (440) 891-3210

STJ-501(4.5) (A)