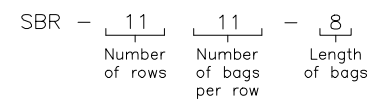


Sly TubeJet Model SBR (SIDE / BOTTOM BAG REMOVAL)

Model No.	Bag Length (ft)	Cloth Area (SQ. ft.)	Bag Quantity	Air Usage (SCFM @ 90 psig)*	Outlet Size	A	B	C	D	E	F	G
SBR-811-	6 8 10	792 1056 1320	88	24	18" x 30"	5'-7"	7'-4"	5'-10"	10'-10"	5'-3 13/16"	6'-10 1/16"	2'-0"
SBR-128-	6 8 10	864 1152 1440	96	13	18" x 24"	8'-0"	5'-4"	6'-5"	11'-5"	7'-11 13/16"	4'-10 1/16"	2'-0"
SBR-1011-	6 8 10	990 1320 1650	110	24	18" x 30"	6'-8"	7'-4"	5'-10"	10'-10"	6'-7 13/16"	6'-10 1/16"	2'-0"
SBR-1111-	6 8 10	1089 1452 1815	121	25	18" x 30"	7'-4"	7'-4"	5'-10"	10'-10"	7'-3 13/16"	6'-10 1/16"	2'-0"
SBR-1311-	6 8 10	1287 1716 2145	143	31	18" x 30"	8'-8"	7'-4"	6'-10"	11'-10"	8'-7 13/16"	6'-10 1/16"	2'-0"
SBR-1511-	6 8 10	1485 1980 2475	165	24	18" x 30"	10'-0"	7'-4"	8'-1"	13'-1"	9'-11 13/16"	6'-10 1/16"	2'-0"
SBR-1711-	6 8 10	1683 2244 2805	187	24	18" x 30"	11'-4"	7'-4"	9'-3"	14'-3"	11'-3 13/16"	6'-10 1/16"	2'-0"

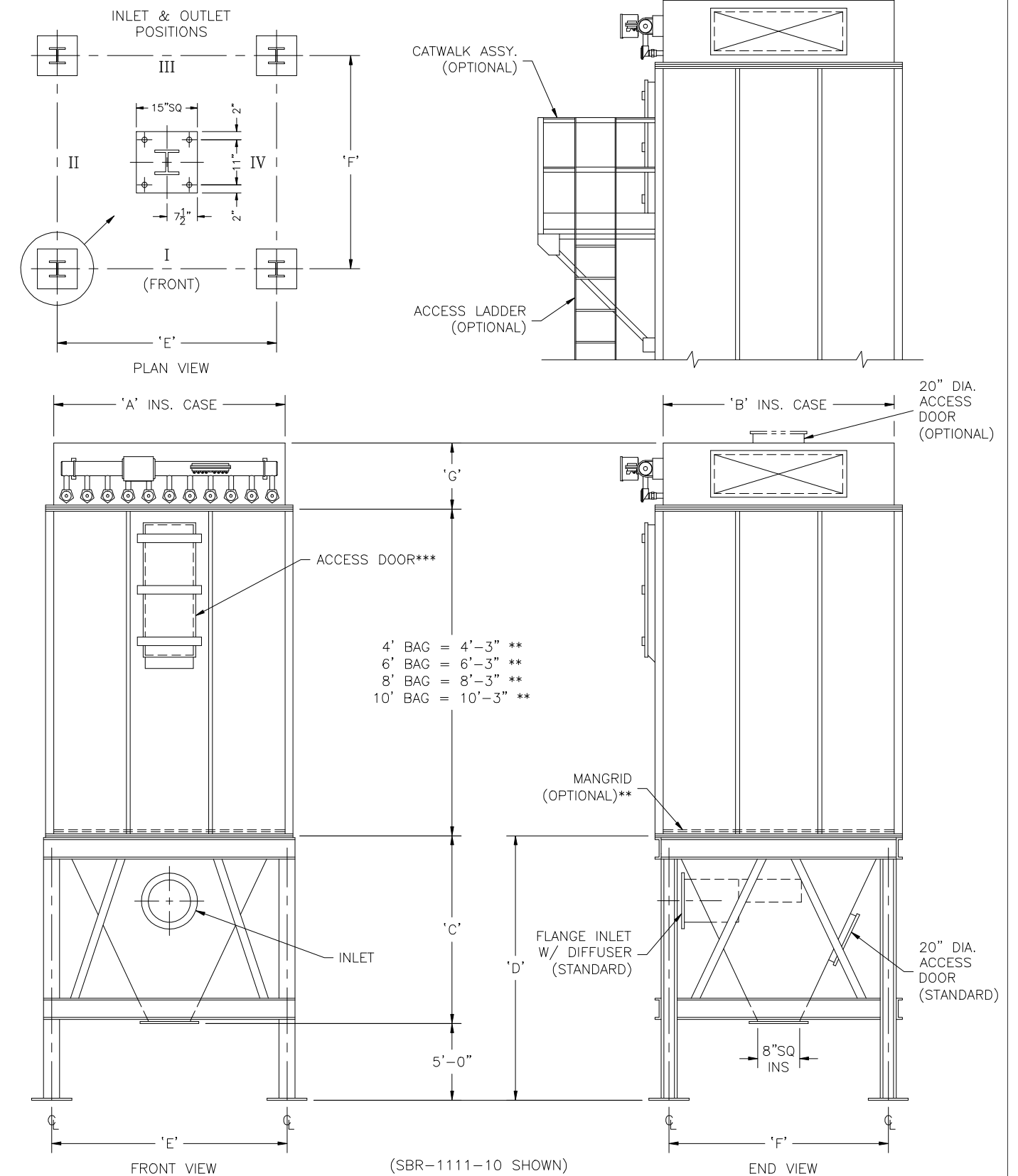
How to Determine Your Model Number



* Guideline based on 10 second off time between pulses and 100 millisecond pulse duration ~ may change based on application

** Add 9" to height for Mangrid

*** Access Door
18" x 36" for 4' & 6' Long Bags
18" x 48" for 8' & 10' Long Bags



NOT FOR CONSTRUCTION

MODEL NO. _____
 VOLUME _____ CFM
 TEMPERATURE _____ °F
 DUST _____
 LOADING _____ GR/CF
 CLOTH AREA _____ SQ.FT.
 NO. OF BAGS _____
 A/C RATIO _____ :1
 PROCESS _____

- NOTES:
- Inlet size based on 3000 fpm maximum velocity.
 - Standard exhaust connection either right or left of header.
 - Standard trough hopper has same depth as pyramidal hopper.
 - Magnehetic gauge w/ bracket, tubing & fittings.
 - Unless otherwise specified, timers shipped assembled & pre-wired to solenoid enclosure.
 - Drawing dimensions are subject to change without prior notice.

SLY INC.
 TECHNOLOGY FOR A CLEAN ENVIRONMENT
 8300 Dow Circle
 Strongsville, OH 44136
 1-800-334-2957
 In Ohio (440) 891-3200
 FAX: (440) 891-3210

SBR-601 (B)