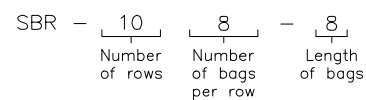


Sly TubeJet Model SBR

(SIDE / BOTTOM BAG REMOVAL)

Model No.	Bag Length (ft)	Cloth Area (SQ. ft.)	Bag Quantity	Air Usage (SCFM @ 90 psig)*	Outlet Size	A	B	C	D	E	F	G
SBR-22-	4 6 8	24 36 48	4	6	6" x 6"	1'-4"	1'-4"	7"	5'-1"	1'-1 1/2"	1'-1 1/2"	1'-0"
SBR-33-	4 6 8	54 81 108	9	6	6" x 6"	2'-0"	2'-0"	1'-2"	5'-8"	1'-9 1/2"	1'-9 1/2"	1'-0"
SBR-34-	4 6 8	72 108 144	12	6	6" x 8"	2'-0"	2'-8"	1'-9"	6'-3"	1'-9 1/2"	2'-5 1/2"	1'-0"
SBR-44-	4 6 8	96 144 192	16	6	7" x 8"	2'-8"	2'-8"	1'-9"	6'-3"	2'-5 1/2"	2'-5 1/2"	1'-0"
SBR-45-	4 6 8	120 180 240	20	6	8" x 8"	2'-8"	3'-4"	2'-4"	6'-10"	2'-5 1/2"	3'-1 1/2"	1'-0"
SBR-55-	4 6 8	150 225 300	25	6	9" x 10"	3'-4"	3'-4"	2'-4"	6'-10"	3'-1 1/2"	3'-1 1/2"	1'-0"
SBR-56-	4 6 8	180 270 360	30	11	9" x 12"	3'-4"	4'-0"	2'-11"	8'-0"	3'-1 1/2"	3'-9 1/2"	1'-0"
SBR-66-	6 8 10	324 432 540	36	11	8" x 24"	4'-0"	4'-0"	2'-11"	8'-0"	3'-9 1/2"	3'-9 1/2"	1'-0"
SBR-68-	6 8 10	432 576 720	48	11	8" x 30"	4'-0"	5'-4"	4'-1"	8'-7"	3'-9 1/2"	5'-1 1/2"	1'-0"
SBR-78-	6 8 10	504 672 840	56	11	8" x 30"	4'-8"	5'-4"	4'-1"	8'-7"	4'-5 1/2"	5'-1 1/2"	1'-0"
SBR-88-	6 8 10	576 768 960	64	11	12" x 24"	5'-4"	5'-4"	4'-1"	8'-7"	5'-1 1/2"	5'-1 1/2"	1'-6"
SBR-98-	6 8 10	648 864 1080	72	11	12" x 30"	6'-0"	5'-4"	4'-8"	9'-2"	5'-9 1/2"	5'-1 1/2"	1'-6"
SBR-108-	6 8 10	720 960 1200	80	11	12" x 30"	6'-8"	5'-4"	5'-3"	9'-9"	6'-5 1/2"	5'-1 1/2"	1'-6"

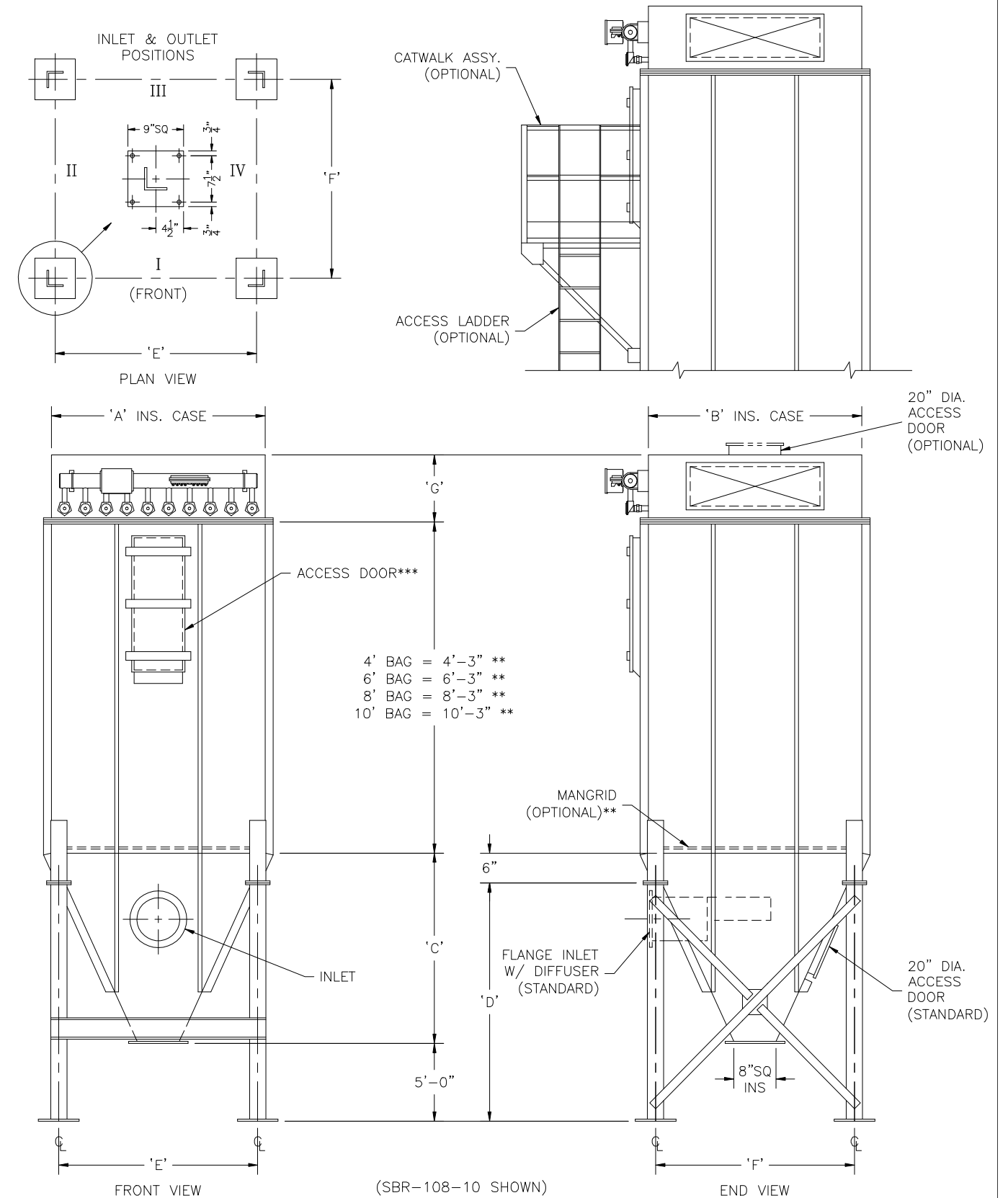
How to Determine Your Model Number



* Guideline based on 10 second off time between pulses and 100 millisecond pulse duration ~ may change based on application

** Add 9" to height for Mangrid

*** Access Door
 18" x 36" for 4' & 6' Long Bags
 18" x 48" for 8' & 10' Long Bags
 SBR-22 door is 12" wide



NOT FOR CONSTRUCTION

MODEL NO. _____

VOLUME _____ CFM

TEMPERATURE _____ °F

DUST _____

LOADING _____ GR/CF

CLOTH AREA _____ SQ.FT.

NO. OF BAGS _____

A/C RATIO _____ :1

PROCESS _____

- NOTES:
- Inlet size based on 3000 fpm maximum velocity.
 - Standard exhaust connection either right or left of header.
 - Standard trough hopper has same depth as pyramidal hopper.
 - Magnehetic gauge w/ bracket, tubing & fittings.
 - Unless otherwise specified, timers shipped assembled & pre-wired to solenoid enclosure.
 - Drawing dimensions are subject to change without prior notice.

SLY INC.

TECHNOLOGY FOR A CLEAN ENVIRONMENT

8300 Dow Circle
 Strongsville, OH 44136
 1-800-334-2957
 In Ohio (440) 891-3200
 FAX: (440) 891-3210

SBR-601-1 (B)