

## SLY PleatJet II Plus Horizontal Cartridge Filter

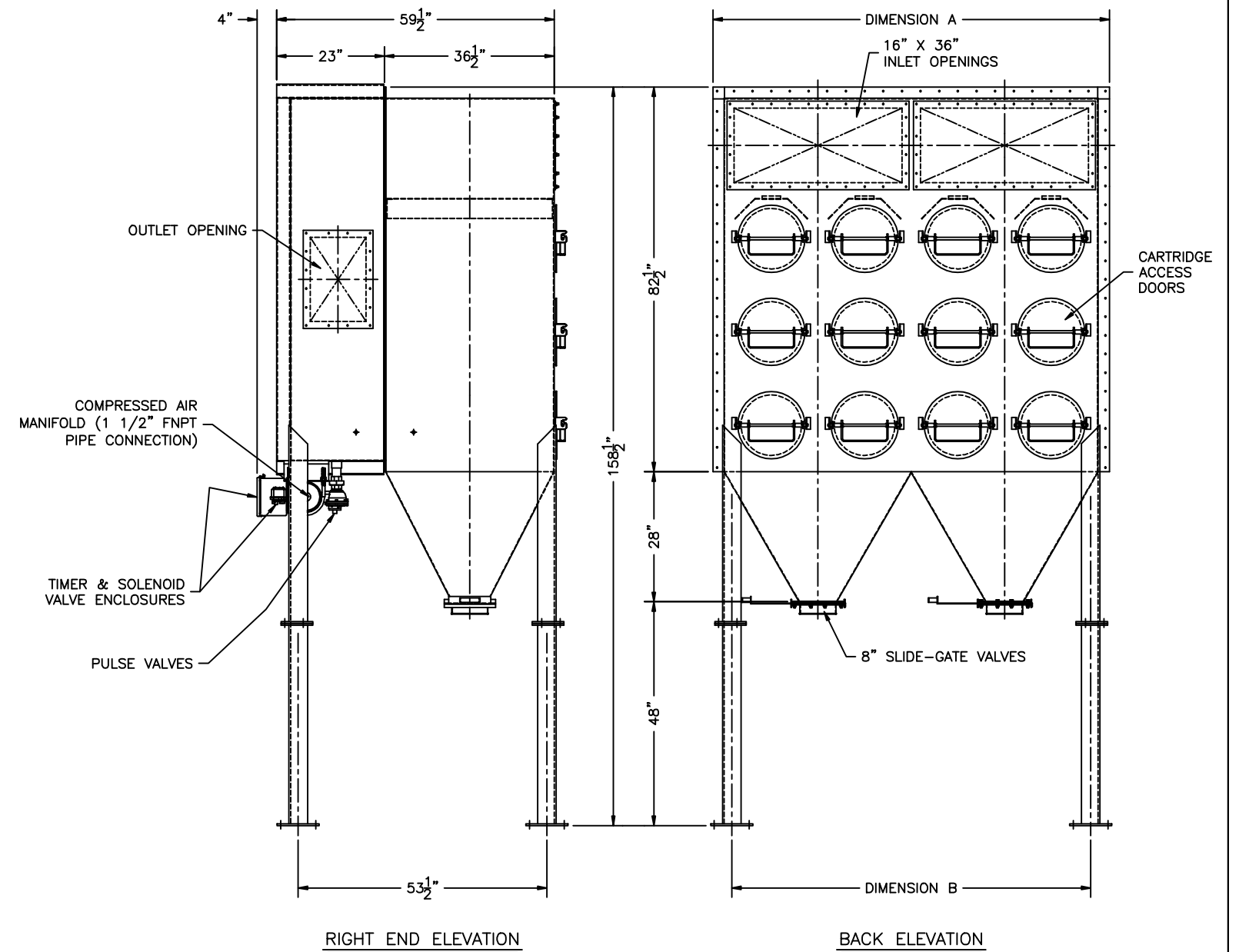
Model No.	Standard Media * Area (Sq. Ft.)	Spun Bonded Media Area* (Sq. Ft.)	Number of Hoppers	Cartridge Quantity	Air Usage (SCFM @ 80 PSIG) **	A	B
HCF-4-3-36	2456	1788	2	12	12	85"	77"
HCF-6-3-36	5184	2682	3	18	12	125"	117"
HCF-8-3-36	6912	3576	4	24	12	165"	157"
HCF-10-3-36	8640	4470	5	30	12	205"	197"
HCF-12-3-36	10,368	5364	6	36	12	245"	237"

### How to Determine Your Model Number

HCF - 4 - 3 - 36  
Number of cartridge columns    Number of cartridge rows    Length of cartridges

\*\*Based on 20 second off time between pulses and 100 millisecond pulse duration (Approx.)

\*Standard based on Cellulose/Synthetic Media (Other available media may have less filter area)



MODEL NO. HCF- \_\_\_\_\_  
 VOLUME \_\_\_\_\_ CFM  
 TEMPERATURE \_\_\_\_\_ °F  
 DUST \_\_\_\_\_  
 LOADING \_\_\_\_\_ GR/CF  
 MEDIA AREA \_\_\_\_\_ SQ.FT.  
 NO. OF CARTRIDGES \_\_\_\_\_  
 A/C RATIO \_\_\_\_\_ :1  
 PROCESS \_\_\_\_\_

- NOTES:
- Inlet size based on 3000 fpm maximum velocity.
  - Standard exhaust connection either right or left of header.
  - Six (6) leg support for model HCF-8-3 and all units larger.
  - Magnehelic gauge w/ bracket, tubing & fittings.
  - Unless otherwise specified, timers shipped assembled & pre-wired to solenoid enclosure.
  - Drawing dimensions are subject to change without prior notice.
  - Delta P Module for on-demand cleaning
  - NOT FOR CONSTRUCTION

**SLY**  
INC.

TECHNOLOGY FOR A CLEAN ENVIROMENT

8300 Dow Circle, Suite 600  
 Strongsville, OH 44136  
 1-800-334-2957  
 In Ohio (440) 891-3200  
 FAX: (440) 891-3210

HCF-500-3-36-C