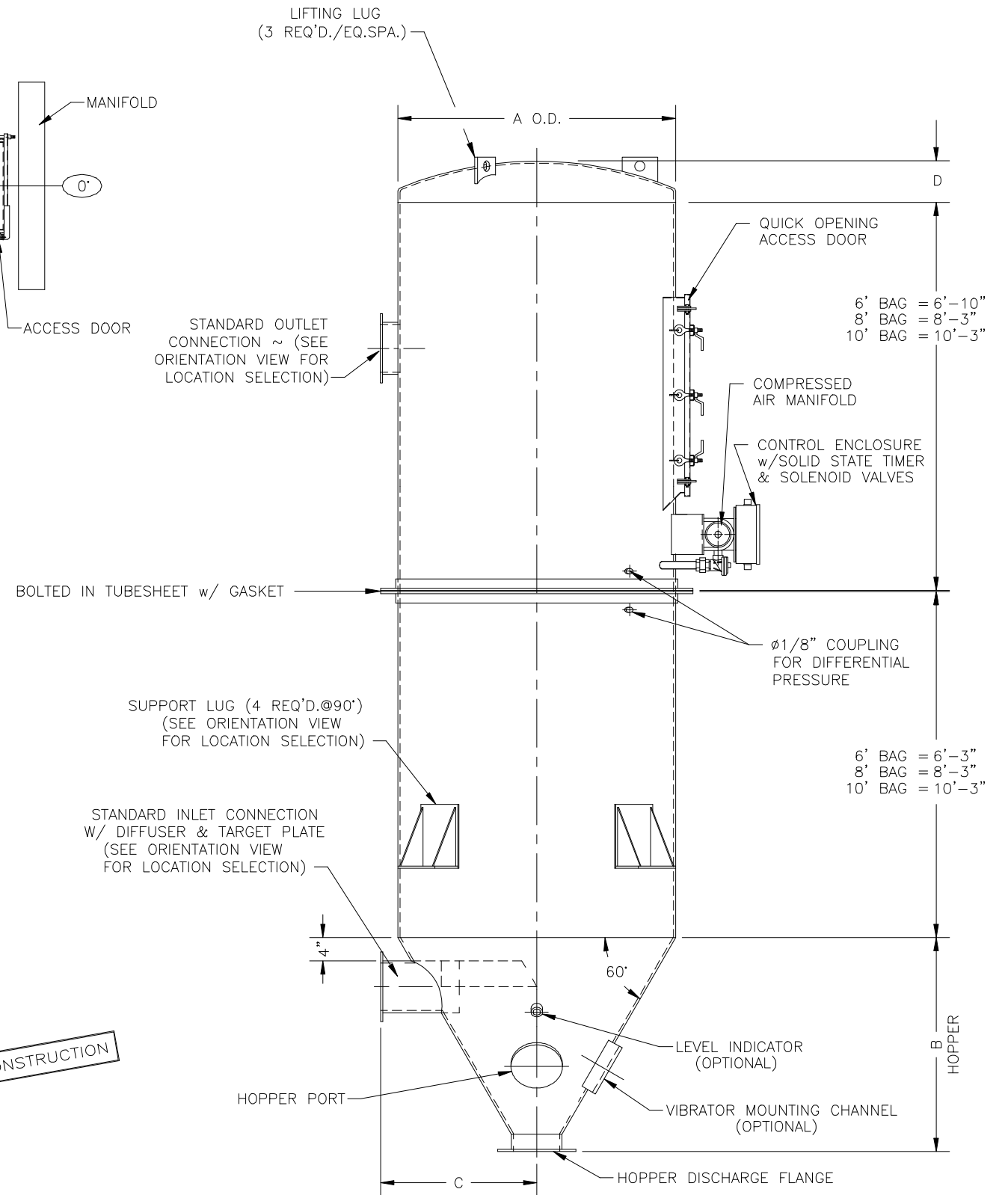
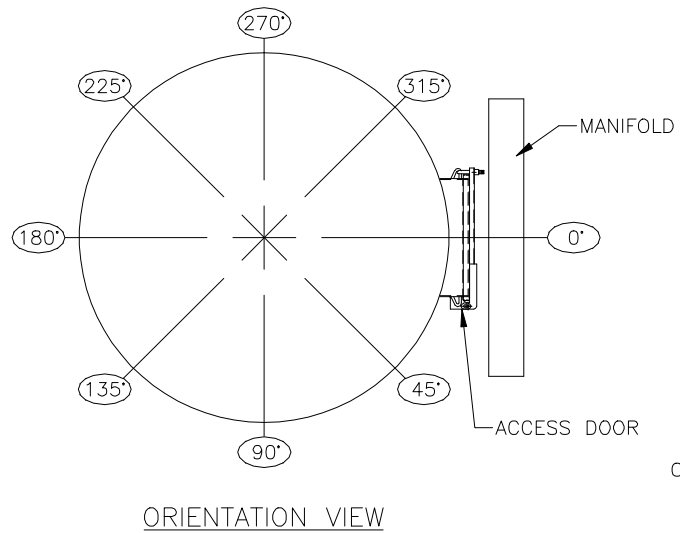


# TubeJet® Model CTR Series w/ Walk-in-Plenum

Model No.	Bag Length	Cloth Area	Bag Quantity	Air* Usage SCFM at 90 PSIG	A	B**	C	D
CTR-50-	6	333 ft <sup>2</sup>	37	9.6	5'-0"	47"	36"	13"
	8	444 ft <sup>2</sup>						
	10	555 ft <sup>2</sup>						
CTR-55-	6	414 ft <sup>2</sup>	46	9.6	5'-6"	52"	39"	14"
	8	552 ft <sup>2</sup>						
	10	690 ft <sup>2</sup>						
CTR-60-	6	531 ft <sup>2</sup>	59	9.6	6'-0"	57"	42"	14"
	8	708 ft <sup>2</sup>						
	10	885 ft <sup>2</sup>						
CTR-65-	8	876 ft <sup>2</sup>	73	9.6	6'-6"	62 1/2"	45"	15"
	10	1095 ft <sup>2</sup>						
CTR-70-	8	1020 ft <sup>2</sup>	85	12.6	7'-0"	67 1/2"	48"	16"
	10	1275 ft <sup>2</sup>						
CTR-75-	8	1128 ft <sup>2</sup>	92	12.6	7'-6"	73"	51"	17"
	10	1410 ft <sup>2</sup>						
CTR-80-	8	1308 ft <sup>2</sup>	109	16	8'-0"	78"	54"	18"
	10	1635 ft <sup>2</sup>						
CTR-85-	8	1512 ft <sup>2</sup>	126	16	8'-6"	83"	57"	18"
	10	1890 ft <sup>2</sup>						
CTR-90-	8	1764 ft <sup>2</sup>	147	21.6	9'-0"	88 1/2"	60"	19"
	10	2205 ft <sup>2</sup>						
CTR-95-	8	1932 ft <sup>2</sup>	159	21.6	9'-6"	93 1/2"	63"	21"
	10	2415 ft <sup>2</sup>						
CTR-100-	8	2124 ft <sup>2</sup>	177	26.6	10'-0"	99"	66"	21"
	10	2655 ft <sup>2</sup>						
CTR-105-	8	2388 ft <sup>2</sup>	199	26.6	10'-6"	104"	69"	22"
	10	2985 ft <sup>2</sup>						
CTR-110-	8	2520 ft <sup>2</sup>	210	32	11'-0"	109"	72"	23"
	10	3150 ft <sup>2</sup>						
CTR-115-	8	2868 ft <sup>2</sup>	241	32	11'-6"	114 1/2"	75"	24"
	10	3585 ft <sup>2</sup>						
CTR-120-	8	3096 ft <sup>2</sup>	258	40	12'-0"	119 1/2"	78"	25"
	10	3870 ft <sup>2</sup>						



## How to Determine Your Model Number

CTR - 50 - 46 - 6 - WIP  
Diameter of unit    Number of bags    Length of bags    Walk in Plenum

## ORIENTATION OPTIONS

STANDARD OUTLET CAN HAVE ANGULAR LOCATIONS CLOCKWISE BETWEEN 90° and 270° IN 45° INCREMENTS

STANDARD OUTLET LOCATION \* REQ'D.

THESE OPTIONS CAN HAVE ANGULAR LOCATIONS CLOCKWISE BETWEEN 0° and 360° IN 45° INCREMENTS

INLET LOCATION \* REQ'D.

ACCESS PORT LOCATION \* OPTION

LEVEL INDICATOR LOCATION \* REQ'D. if NEEDED

VIBRATOR LOCATION \* REQ'D. if NEEDED

NOTE: DO NOT LOCATE MORE THAN ONE COMPONENT AT EACH POSITION ON THE HOPPER OR CAS.

\* Based on 10 second off time between pulses

\*\* Based on Ø8" hopper discharge

## SUPPORT LUG OPTIONS ARE:

STANDARD SUPPORT LUG LOCATIONS  45°  135°  225°  315°

OPTIONAL SUPPORT LUG LOCATIONS  0°  90°  180°  270°

SUPPORT LUG LOCATIONS REQ'D.

CAUTION: INLET LOCATION CAN NOT COINCIDE WITH SUPPORT LUG LOCATION WHEN SUPPORT LEGS ARE TO BE USED.

## OTHER OPTIONS

OUTLET SIZE

INLET SIZE

ELECTRICALS  NEMA 4  NEMA 4X  NEMA 7/9

NOTE: OUTLET SIZE SHOULD NOT BE SMALLER THAN INLET SIZE.

## HOPPER DISCHARGE OPENING SIZE:

8" DIA.(STD\*SHOWN)  10" DIA.(OPTIONAL)  12" DIA.(OPTIONAL)

NOT FOR CONSTRUCTION

UPDATED: 11/18/04

MODEL NO. \_\_\_\_\_  
 VOLUME \_\_\_\_\_ CFM  
 TEMPERATURE \_\_\_\_\_ °F  
 DUST \_\_\_\_\_  
 LOADING \_\_\_\_\_ GR/CF  
 CLOTH AREA \_\_\_\_\_ SQ.FT.  
 NO. OF BAGS \_\_\_\_\_  
 A/C RATIO \_\_\_\_\_ :1

PROCESS \_\_\_\_\_

## NOTES:

- Inlet size based on 3000 fpm maximum velocity.
- Drawing dimensions are subject to change without prior notice.

**SLY** INC.

TECHNOLOGY FOR A CLEAN ENVIRONMENT

8300 Dow Circle  
 Strongsville, OH 44136

1-800-334-2957

CTW-700-3