

# TubeJet® Model CTR Flat-Top Series

Model No.	Bag Length	Cloth Area	Bag Quantity	Air* Usage SCFM at 90 PSIG	A	B	C	D	E	F
CTR-15-	4	18 ft <sup>2</sup>	3	9.6	18"	10 1/2"	13"	6 1/2"	12"	12"
CTR-25-	4	48 ft <sup>2</sup>	8	9.6	30"	20 7/8"	13"	6 1/2"	18"	18"
CTR-30-	4	78 ft <sup>2</sup>	13	9.6	36"	26"	14"	7"	21"	21"
CTR-35-	4	114 ft <sup>2</sup>	19	9.6	42"	31 1/4"	16"	8"	24"	24"
CTR-40-	6	198 ft <sup>2</sup>	22	9.6	48"	36 1/2"	18"	9"	30"	30"
CTR-45-	6	279 ft <sup>2</sup>	31	9.6	54"	41 5/8"	20"	10"	33"	33"
CTR-50-	6	333 ft <sup>2</sup>	37	9.6	60"	46 3/4"	20"	10"	36"	36"
CTR-55-	6	414 ft <sup>2</sup>	46	9.6	66"	52"	22"	11"	39"	39"
CTR-60-	6	531 ft <sup>2</sup>	59	9.6	72"	57 1/4"	24"	12"	42"	42"
CTR-65-	8	876 ft <sup>2</sup>	73	9.6	78"	62 3/8"	26"	13"	45"	45"
CTR-70-	8	1020 ft <sup>2</sup>	85	12.6	84"	67 5/8"	26"	13"	48"	48"
CTR-75-	8	1128 ft <sup>2</sup>	92	12.6	90"	72 3/4"	28"	14"	51"	51"
CTR-80-	8	1308 ft <sup>2</sup>	109	16	96"	78"	28"	14"	54"	54"
CTR-85-	8	1512 ft <sup>2</sup>	126	16	102"	83 1/4"	32"	16"	57"	57"
CTR-90-	8	1764 ft <sup>2</sup>	147	21.6	108"	88 3/8"	32"	16"	60"	60"
CTR-95-	8	1932 ft <sup>2</sup>	159	21.6	114"	93 5/8"	36"	18"	63"	63"
CTR-100-	8	2124 ft <sup>2</sup>	177	26.6	120"	98 3/4"	36"	18"	66"	66"
CTR-105-	8	2388 ft <sup>2</sup>	199	26.6	126"	104"	38"	19"	69"	69"
CTR-110-	8	2520 ft <sup>2</sup>	210	32	132"	109 1/8"	38"	19"	72"	72"
CTR-115-	8	2868 ft <sup>2</sup>	241	32	138"	114 3/8"	40"	20"	75"	75"
CTR-120-	8	3096 ft <sup>2</sup>	258	40	144"	119 1/2"	40"	20"	78"	78"

How to Determine Your Model Number

CTR - 40 - 22 - 6  
Diameter of unit    Number of bags    Length of bags

\* Based on 10 second off time between pulses

### ORIENTATION OPTIONS

STANDARD OUTLETS CAN HAVE ANGULAR LOCATIONS CLOCKWISE BETWEEN 90° and 270° IN 45° INCREMENTS

STANDARD OUTLET LOCATION \* REQ'D.   
 OPTIONAL OUTLET \* REQ'D. if NEEDED

THESE OPTIONS CAN HAVE ANGULAR LOCATIONS CLOCKWISE BETWEEN 0° and 360° IN 45° INCREMENTS

INLET LOCATION \* REQ'D.   
 ACCESS DOOR LOCATION \* REQ'D.   
 LEVEL INDICATOR LOCATION \* REQ'D. if NEEDED   
 VIBRATOR LOCATION \* REQ'D. if NEEDED   
 POKE HOLE LOCATION \* REQ'D. if NEEDED

NOTE: DO NOT LOCATE MORE THAN ONE COMPONENT AT EACH POSITION ON THE HOPPER.

### SUPPORT LUG OPTIONS ARE:

STANDARD SUPPORT LUG LOCATIONS  45°  135°  225°  315°  
 OPTIONAL SUPPORT LUG LOCATIONS  0°  90°  180°  270°

SUPPORT LUG LOCATIONS REQ'D.

CAUTION: INLET LOCATION CAN NOT COINCIDE WITH SUPPORT LUG LOCATION WHEN SUPPORT LEGS ARE TO BE USED.

### OTHER OPTIONS

OUTLET SIZE

INLET SIZE

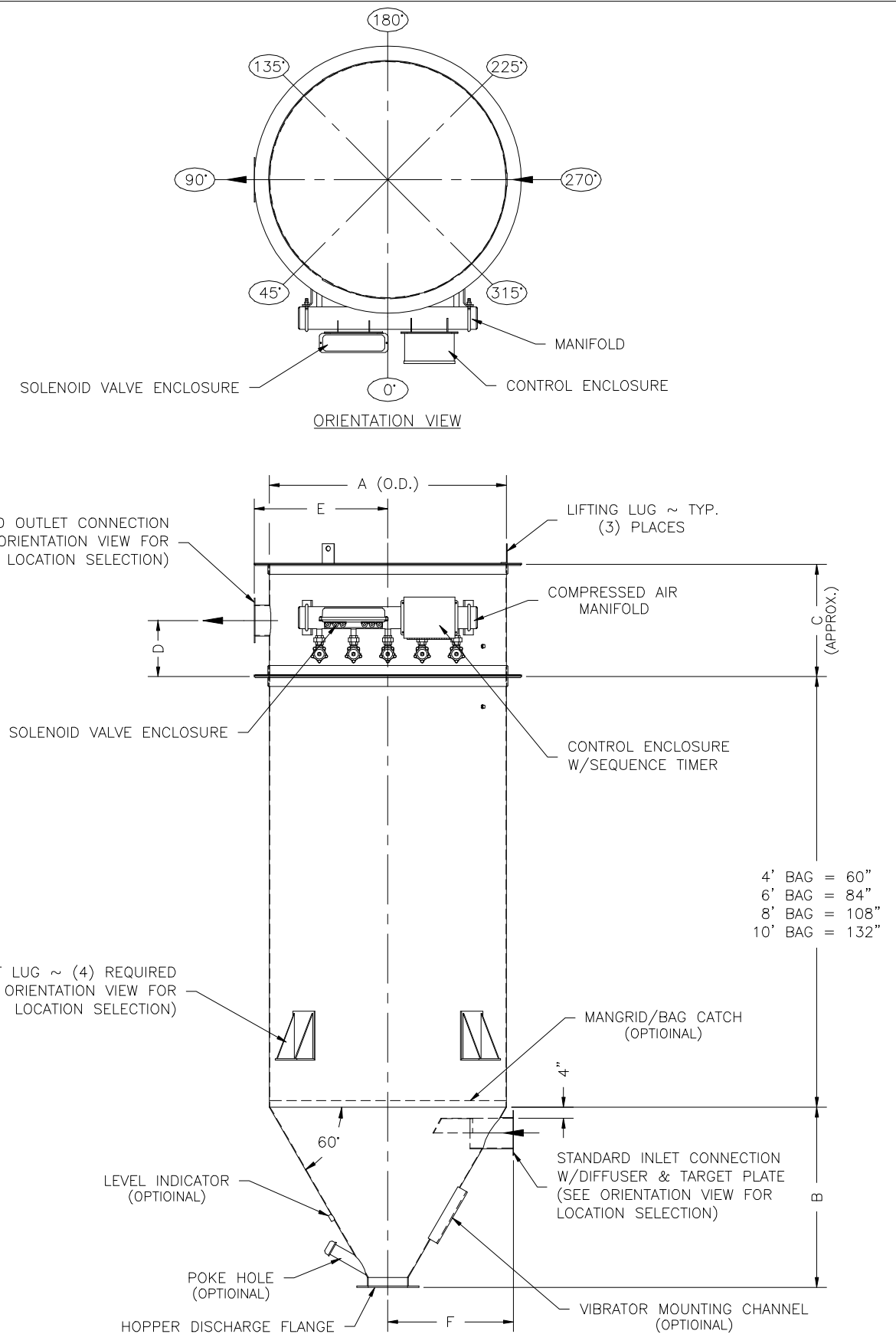
ELECTRICALS  NEMA 4  NEMA 4X  NEMA 7/9

INTERNAL MANGRID/BAG CATCH  YES  NO  
 NOTE: OUTLET SIZE SHOULD NOT BE SMALLER THAN INLET SIZE.

### HOPPER DISCHARGE OPENING SIZE:

8" DIA.(STD\*SHOWN)  10" DIA.(OPTIONAL)  12" DIA.(OPTIONAL)

NOT FOR CONSTRUCTION



DATE: 11/7/00

MODEL NO. \_\_\_\_\_  
 VOLUME \_\_\_\_\_ CFM  
 TEMPERATURE \_\_\_\_\_ °F  
 DUST \_\_\_\_\_  
 LOADING \_\_\_\_\_ GR/CF  
 CLOTH AREA \_\_\_\_\_ SQ.FT.  
 NO. OF BAGS \_\_\_\_\_  
 A/C RATIO \_\_\_\_\_ :1  
 PROCESS \_\_\_\_\_

### NOTES:

- Inlet size based on 3000 fpm maximum velocity.
- Drawing dimensions are subject to change without prior notice.

**SLY** INC.

TECHNOLOGY FOR A CLEAN ENVIRONMENT

8300 Dow Circle  
 Strongsville, OH 44136

1-800-334-2957

CTR-FT