

TubeJet® Model CBR Flat-Top Series

Model No.	Bag Length	Cloth Area	Bag Quantity	Air* Usage SCFM at 90 PSIG	A	B	C	D	E	F
CBR-15-	4	18 ft ²	3	9.6	18"	10 1/2"	13"	6 1/2"	12"	12"
CBR-25-	4	48 ft ²	8	9.6	30"	20 7/8"	13"	6 1/2"	18"	18"
CBR-30-	4	78 ft ²	13	9.6	36"	26"	14"	7"	21"	21"
CBR-35-	4	114 ft ²	19	9.6	42"	31 1/4"	16"	8"	24"	24"
CBR-40-	6	198 ft ²	22	9.6	48"	36 1/2"	18"	9"	30"	30"
CBR-45-	6	279 ft ²	31	9.6	54"	41 5/8"	20"	10"	33"	33"
CBR-50-	6	333 ft ²	37	9.6	60"	46 3/4"	20"	10"	36"	36"
CBR-55-	6	414 ft ²	46	9.6	66"	52"	22"	11"	39"	39"
CBR-60-	6	531 ft ²	59	9.6	72"	57 1/4"	24"	12"	42"	42"
CBR-65-	8	876 ft ²	73	9.6	78"	62 3/8"	26"	13"	45"	45"
CBR-70-	8	1020 ft ²	85	12.6	84"	67 5/8"	26"	13"	48"	48"
CBR-75-	8	1128 ft ²	92	12.6	90"	72 3/4"	28"	14"	51"	51"
CBR-80-	8	1308 ft ²	109	16	96"	78"	28"	14"	54"	54"
CBR-85-	8	1512 ft ²	126	16	102"	83 1/4"	32"	16"	57"	57"
CBR-90-	8	1764 ft ²	147	21.6	108"	88 3/8"	32"	16"	60"	60"
CBR-95-	8	1932 ft ²	159	21.6	114"	93 5/8"	36"	18"	63"	63"
CBR-100-	8	2124 ft ²	177	26.6	120"	98 3/4"	36"	18"	66"	66"
CBR-105-	8	2388 ft ²	199	26.6	126"	104"	38"	19"	69"	69"
CBR-110-	8	2520 ft ²	210	32	132"	109 1/8"	38"	19"	72"	72"
CBR-115-	8	2868 ft ²	241	32	138"	114 3/8"	40"	20"	75"	75"
CBR-120-	8	3096 ft ²	258	40	144"	119 1/2"	40"	20"	78"	78"

How to Determine Your Model Number

CBR - 40 - 22 - 6
Diameter of unit Number of bags Length of bags

* Based on 10 second off time between pulses

ORIENTATION OPTIONS

STANDARD OUTLETS CAN HAVE ANGULAR LOCATIONS CLOCKWISE BETWEEN 90° and 270° IN 45° INCREMENTS

STANDARD OUTLET LOCATION * REQ'D.
 OPTIONAL OUTLET * REQ'D. if NEEDED

THESE OPTIONS CAN HAVE ANGULAR LOCATIONS CLOCKWISE BETWEEN 0° and 360° IN 45° INCREMENTS

INLET LOCATION * REQ'D.
 ACCESS DOOR LOCATION * REQ'D.
 LEVEL INDICATOR LOCATION * REQ'D. if NEEDED
 VIBRATOR LOCATION * REQ'D. if NEEDED
 POKE HOLE LOCATION * REQ'D. if NEEDED

NOTE: DO NOT LOCATE MORE THAN ONE COMPONENT AT EACH POSITION ON THE HOPPER.

SUPPORT LUG OPTIONS ARE:

STANDARD SUPPORT LUG LOCATIONS 45° 135° 225° 315°
 OPTIONAL SUPPORT LUG LOCATIONS 0° 90° 180° 270°

SUPPORT LUG LOCATIONS REQ'D.

CAUTION: INLET LOCATION CAN NOT COINCIDE WITH SUPPORT LUG LOCATION WHEN SUPPORT LEGS ARE TO BE USED.

OTHER OPTIONS

OUTLET SIZE

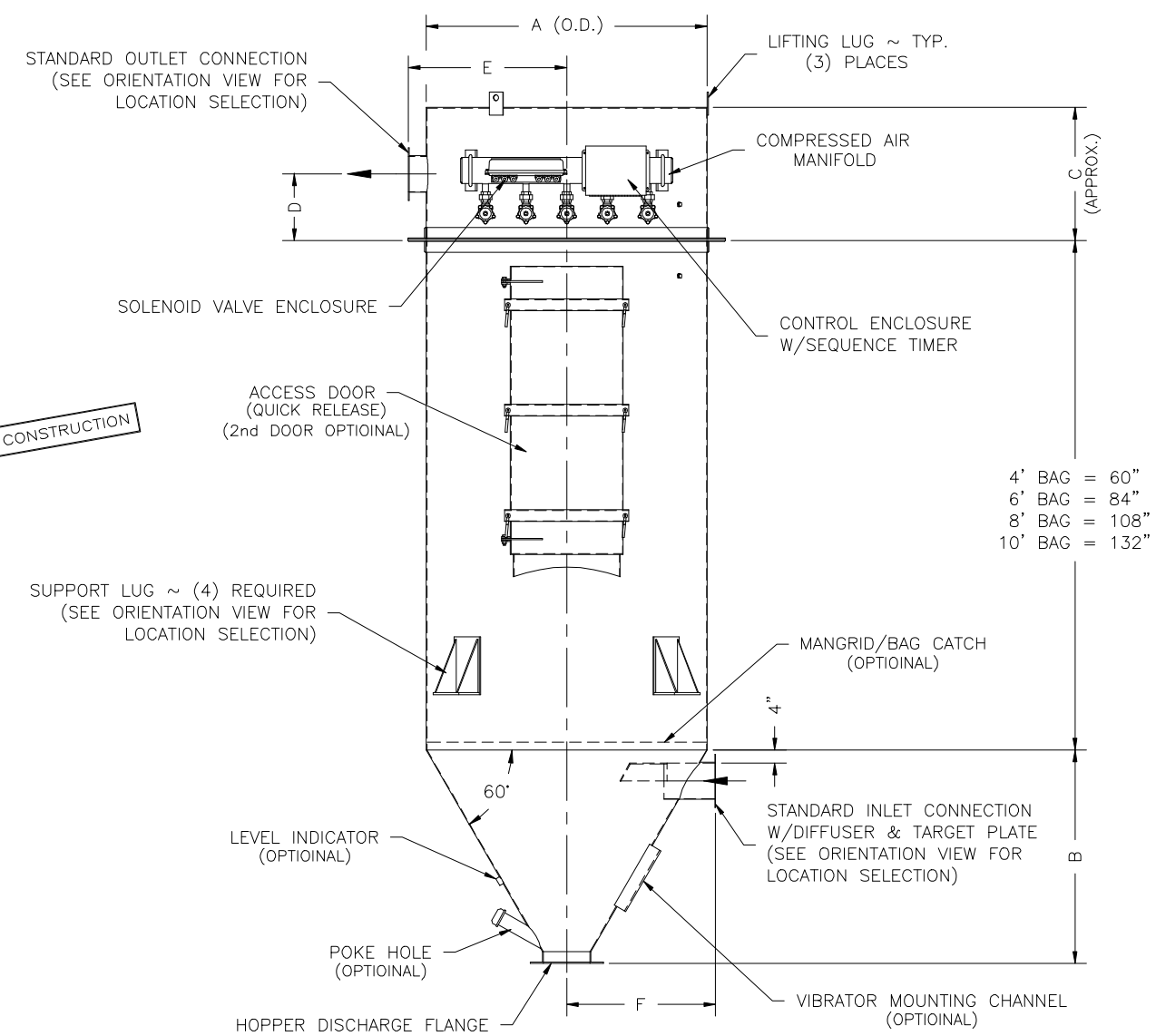
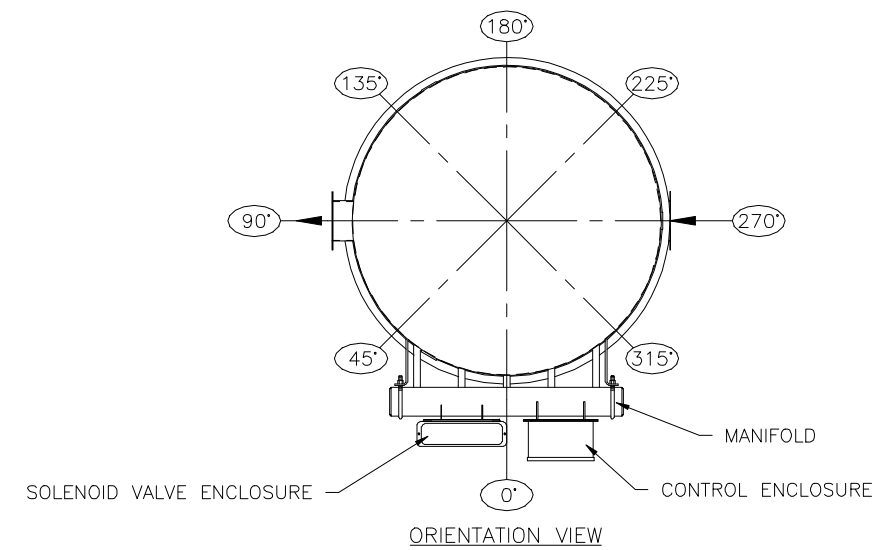
INLET SIZE

ELECTRICALS NEMA 4 NEMA 4X NEMA 7/9

INTERNAL MANGRID/BAG CATCH YES NO
 NOTE: OUTLET SIZE SHOULD NOT BE SMALLER THAN INLET SIZE.

HOPPER DISCHARGE OPENING SIZE:

8" DIA.(STD*SHOWN) 10" DIA.(OPTIONAL) 12" DIA.(OPTIONAL)



NOT FOR CONSTRUCTION

4' BAG = 60"
 6' BAG = 84"
 8' BAG = 108"
 10' BAG = 132"

DATE: 11/7/00

MODEL NO. _____
 VOLUME _____ CFM
 TEMPERATURE _____ °F
 DUST _____
 LOADING _____ GR/CF
 CLOTH AREA _____ SQ.FT.
 NO. OF BAGS _____
 A/C RATIO _____ :1
 PROCESS _____

NOTES:
 - Inlet size based on 3000 fpm maximum velocity.
 - Drawing dimensions are subject to change without prior notice.

SLY INC.
 TECHNOLOGY FOR A CLEAN ENVIRONMENT
 8300 Dow Circle
 Strongsville, OH 44136
 1-800-334-2957
CBR-FT