

# TubeJet® Model CBR Series w/ Tangential Inlet

Model No.	Bag Length	Cloth Area	Bag Quantity	Air* Usage SCFM at 90 PSIG	A	B**	C	D	E
CBR-15-	4	18 ft <sup>2</sup>	3	9.6	1'-6"	10 1/2"	17"	10"	11"
CBR-25-	4	48 ft <sup>2</sup>	8	9.6	2'-6"	21"	20"	16"	12"
CBR-30-	4	78 ft <sup>2</sup>	13	9.6	3'-0"	26"	22"	19"	13"
CBR-35-	4	114 ft <sup>2</sup>	19	9.6	3'-6"	31"	25"	22"	15"
CBR-40-	6	198 ft <sup>2</sup>	22	9.6	4'-0"	36 1/2"	28"	25"	17"
CBR-45-	6	279 ft <sup>2</sup>	31	9.6	4'-6"	41 1/2"	31"	28"	19"
CBR-50-	6	333 ft <sup>2</sup>	37	9.6	5'-0"	47"	32"	31"	22"
CBR-55-	6	414 ft <sup>2</sup>	46	9.6	5'-6"	52"	35"	34"	24"
CBR-60-	6	531 ft <sup>2</sup>	59	9.6	6'-0"	57"	37"	37"	27"
CBR-65-	8	876 ft <sup>2</sup>	73	9.6	6'-6"	62 1/2"	40"	40"	29"
CBR-70-	8	1020 ft <sup>2</sup>	85	12.6	7'-0"	67 1/2"	41"	42"	31"
CBR-75-	8	1128 ft <sup>2</sup>	92	12.6	7'-6"	73"	44"	46"	33"
CBR-80-	8	1308 ft <sup>2</sup>	109	16	8'-0"	78"	45"	49"	35"
CBR-85-	8	1512 ft <sup>2</sup>	126	16	8'-6"	83"	49"	52"	37"
CBR-90-	8	1764 ft <sup>2</sup>	147	21.6	9'-0"	88 1/2"	50"	55"	40"
CBR-95-	8	1932 ft <sup>2</sup>	159	21.6	9'-6"	93 1/2"	56"	58"	42"
CBR-100-	8	2124 ft <sup>2</sup>	177	26.6	10'-0"	99"	56"	61"	44"
CBR-105-	8	2388 ft <sup>2</sup>	199	26.6	10'-6"	104"	59"	64"	46"
CBR-110-	8	2520 ft <sup>2</sup>	210	32	11'-0"	109"	60"	67"	48"
CBR-115-	8	2868 ft <sup>2</sup>	241	32	11'-6"	114 1/2"	63"	70"	51"
CBR-120-	8	3096 ft <sup>2</sup>	258	40	12'-0"	119 1/2"	64"	73"	53"

How to Determine Your Model Number

CBR - 40 - 22 - 6  
Diameter of unit    Number of bags    Length of bags

\*Based on 10 second off time between pulses  
 \*\*Based on ø8" hopper discharge

### ORIENTATION OPTIONS

STANDARD OUTLET CAN HAVE ANGULAR LOCATIONS  
 CLOCKWISE BETWEEN 90° and 270° IN 45° INCREMENTS

STANDARD OUTLET LOCATION \* REQ'D.

THESE OPTIONS CAN HAVE ANGULAR LOCATIONS  
 CLOCKWISE BETWEEN 0° and 360° IN 45° INCREMENTS

INLET LOCATION \* REQ'D.   
 ACCESS DOOR LOCATION \* REQ'D.   
 LEVEL INDICATOR LOCATION \* REQ'D. if NEEDED   
 VIBRATOR LOCATION \* REQ'D. if NEEDED

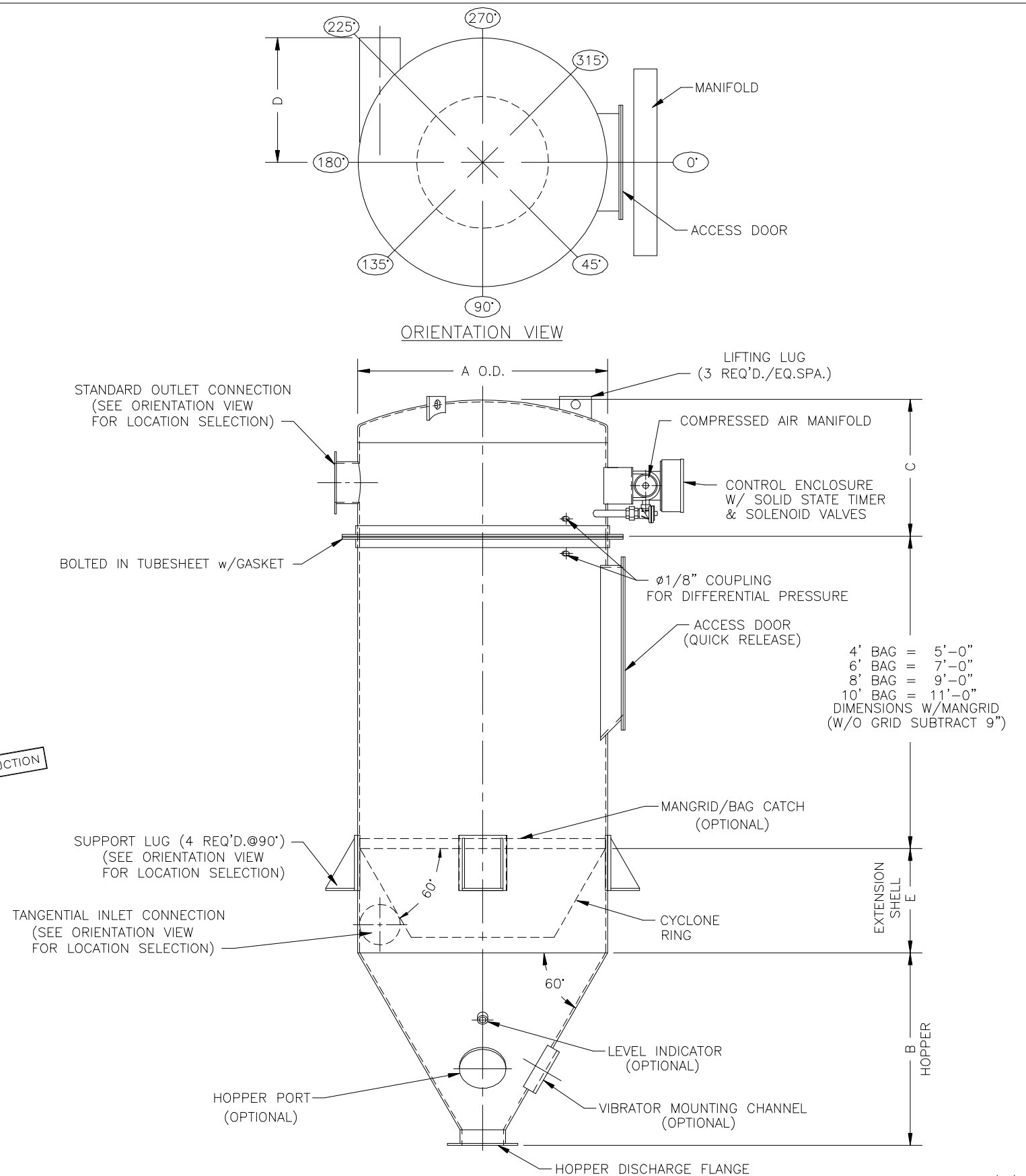
NOTE: DO NOT LOCATE MORE THAN ONE COMPONENT  
 AT EACH POSITION ON THE HOPPER.

SUPPORT LUG:  
 SUPPORT LUG LOCATION TO BE  0°  90°  180°  270°   
 PERPENDICULAR TO TANGENTIAL INLET  0°  90°  180°  270°   
 SUPPORT LUG LOCATIONS REQ'D.      
 CAUTION: INLET LOCATION MUST COINCIDE WITH SUPPORT LUG LOCATION

### OTHER OPTIONS

OUTLET SIZE     
 INLET SIZE     
 ELECTRICALS  NEMA 4  NEMA 4X  NEMA 7/9  
 INTERNAL MANGRID/BAG CATCH  YES  NO  
 NOTE: OUTLET SIZE SHOULD NOT BE SMALLER THAN INLET SIZE.  
 HOPPER DISCHARGE OPENING SIZE:  
 8" DIA.(STD\*SHOWN)  10" DIA.(OPTIONAL)  12" DIA.(OPTIONAL)

NOT FOR CONSTRUCTION



UPDATED: 11/19/04

MODEL NO. \_\_\_\_\_  
 VOLUME \_\_\_\_\_ CFM  
 TEMPERATURE \_\_\_\_\_ °F  
 DUST \_\_\_\_\_  
 LOADING \_\_\_\_\_ GR/CF  
 CLOTH AREA \_\_\_\_\_ SQ.FT.  
 NO. OF BAGS \_\_\_\_\_  
 A/C RATIO \_\_\_\_\_ :1  
 PROCESS \_\_\_\_\_

NOTES:  
 - Inlet size based on 3000 fpm maximum velocity.  
 - Drawing dimensions are subject to change without prior notice.

**SLY** INC.  
 TECHNOLOGY FOR A  
 CLEAN ENVIRONMENT  
 8300 Dow Circle  
 Strongsville, OH 44136  
 1-800-334-2957  
**CBR-800-2**