

TubeJet® Model CBR Series

Model No.	Bag Length	Cloth Area	Bag Quantity	Air Usage SCFM at 90 PSIG	A	B**	C	D
CBR-15-	4	18 ft ²	3	9.6	1'-6"	10 1/2"	17"	12"
CBR-25-	4	48 ft ²	8	9.6	2'-6"	21"	20"	18"
CBR-30-	4	78 ft ²	13	9.6	3'-0"	26"	22"	21"
CBR-35-	4	114 ft ²	19	9.6	3'-6"	31"	25"	24"
CBR-40-	4	171 ft ²	22	9.6	4'-0"	36 1/2"	28"	30"
CBR-45-	4	228 ft ²	31	9.6	4'-6"	41 1/2"	31"	33"
CBR-50-	4	333 ft ²	37	9.6	5'-0"	47"	32"	36"
CBR-55-	4	444 ft ²	46	9.6	5'-6"	52"	35"	39"
CBR-60-	4	552 ft ²	59	9.6	6'-0"	57"	37"	42"
CBR-65-	4	680 ft ²	73	9.6	6'-6"	62 1/2"	40"	45"
CBR-70-	4	828 ft ²	85	12.6	7'-0"	67 1/2"	41"	48"
CBR-75-	4	996 ft ²	92	12.6	7'-6"	73"	44"	51"
CBR-80-	4	1188 ft ²	109	16	8'-0"	78"	45"	54"
CBR-85-	4	1404 ft ²	126	16	8'-6"	83"	49"	57"
CBR-90-	4	1644 ft ²	143	21.6	9'-0"	88 1/2"	50"	60"
CBR-95-	4	1908 ft ²	159	21.6	9'-6"	93 1/2"	56"	63"
CBR-100-	4	2196 ft ²	178	26.6	10'-0"	99"	56"	66"
CBR-105-	4	2508 ft ²	199	26.6	10'-6"	104"	59"	69"
CBR-110-	4	2844 ft ²	210	32	11'-0"	109"	60"	72"
CBR-115-	4	3204 ft ²	241	32	11'-6"	114 1/2"	63"	75"
CBR-120-	4	3588 ft ²	258	40	12'-0"	119 1/2"	64"	78"

How to Determine Your Model Number

CBR - 40 - 22 - 6
Diameter of unit Number of bags Length of bags

ORIENTATION OPTIONS

STANDARD OUTLET CAN HAVE ANGULAR LOCATIONS
 CLOCKWISE BETWEEN 0° and 270° IN 45° INCREMENTS

STANDARD OUTLET LOCATION * REQ'D.

THESE OPTIONS CAN HAVE ANGULAR LOCATIONS
 CLOCKWISE BETWEEN 0° and 360° IN 45° INCREMENTS

- INLET LOCATION * REQ'D.
- ACCESS DOOR LOCATION * REQ'D.
- LEVEL INDICATOR LOCATION * REQ'D. IF NEEDED
- VIBRATOR LOCATION * REQ'D. IF NEEDED

NOTE: DO NOT LOCATE MORE THAN ONE COMPONENT
 AT EACH POSITION ON THE HOPPER.

* Based on 10 second off time between pulses
 ** Based on #8" hopper discharge

SUPPORT LUG OPTIONS ARE:

STANDARD SUPPORT LUG LOCATIONS 45° 135° 225° 315°
 OPTIONAL SUPPORT LUG LOCATIONS 0° 90° 180° 270°

SUPPORT LUG LOCATIONS REQ'D.

CAUTION: INLET LOCATION CAN NOT COINCIDE WITH SUPPORT
 LUG LOCATION WHEN SUPPORT LEGS ARE TO BE USED.

OTHER OPTIONS

OUTLET SIZE _____
 INLET SIZE _____

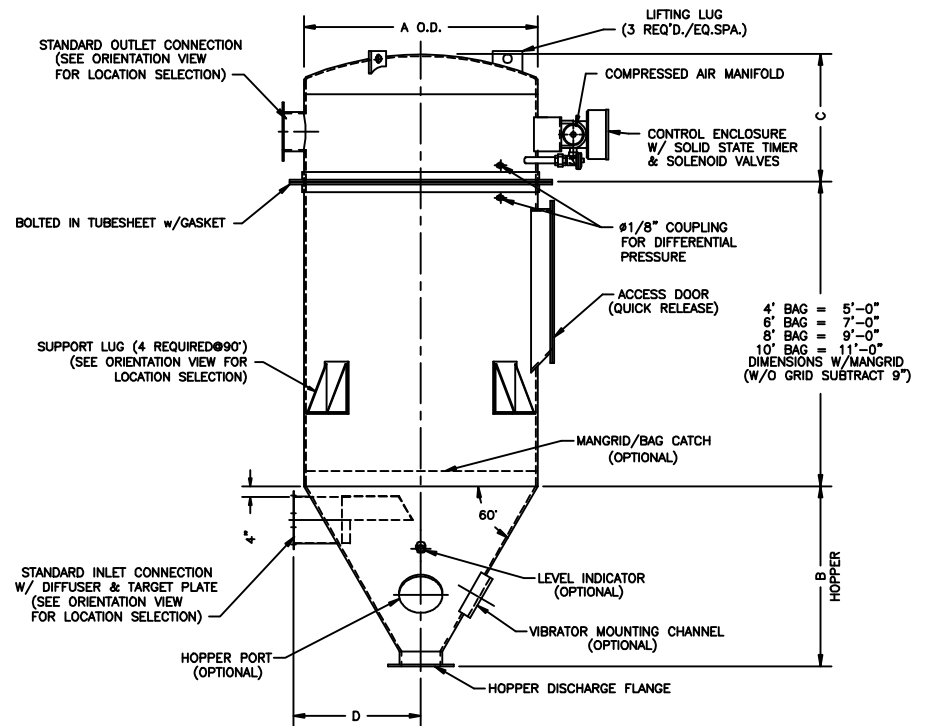
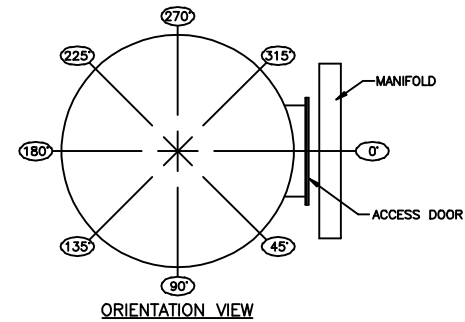
ELECTRICALS _____ NEMA 4 NEMA 4X NEMA 7/9

INTERNAL MANGRID/BAG CATCH _____ YES NO
 NOTE: OUTLET SIZE SHOULD NOT BE SMALLER THAN INLET SIZE.

HOPPER DISCHARGE OPENING SIZE:

8" DIA.(STD*SHOWN) 10" DIA.(OPTIONAL) 12" DIA.(OPTIONAL)

NOT FOR CONSTRUCTION



UPDATED: 11/19/04

MODEL NO. _____
 VOLUME _____ CFM
 TEMPERATURE _____ °F
 DUST _____
 LOADING _____ GR/CF
 CLOTH AREA _____ SQ.FT.
 NO. OF BAGS _____
 A/C RATIO _____ :1
 PROCESS _____

NOTES:

- Inlet size based on 3000 fpm maximum velocity.
- Drawing dimensions are subject to change without prior notice.

SLY INC.
 TECHNOLOGY FOR A
 CLEAN ENVIRONMENT
 8300 Dow Circle
 Strongsville, OH 44136
 1-800-334-2957

CBR-800-1