

Model T-8 Series Manually Operated Loading Spout
 - General Specifications -

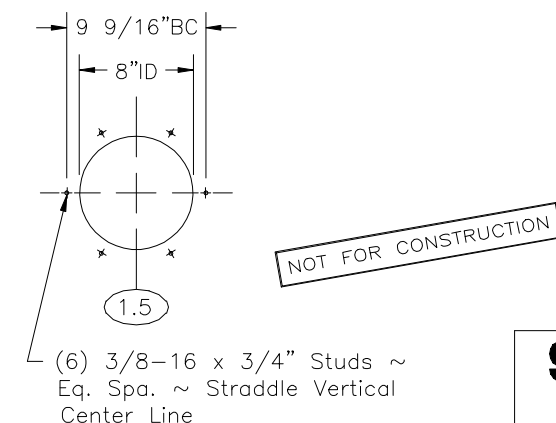
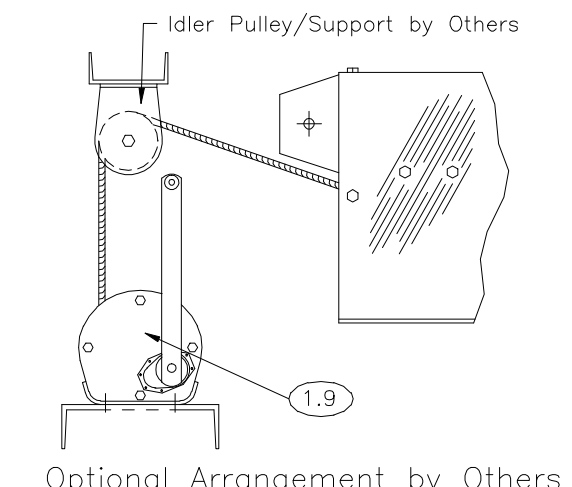
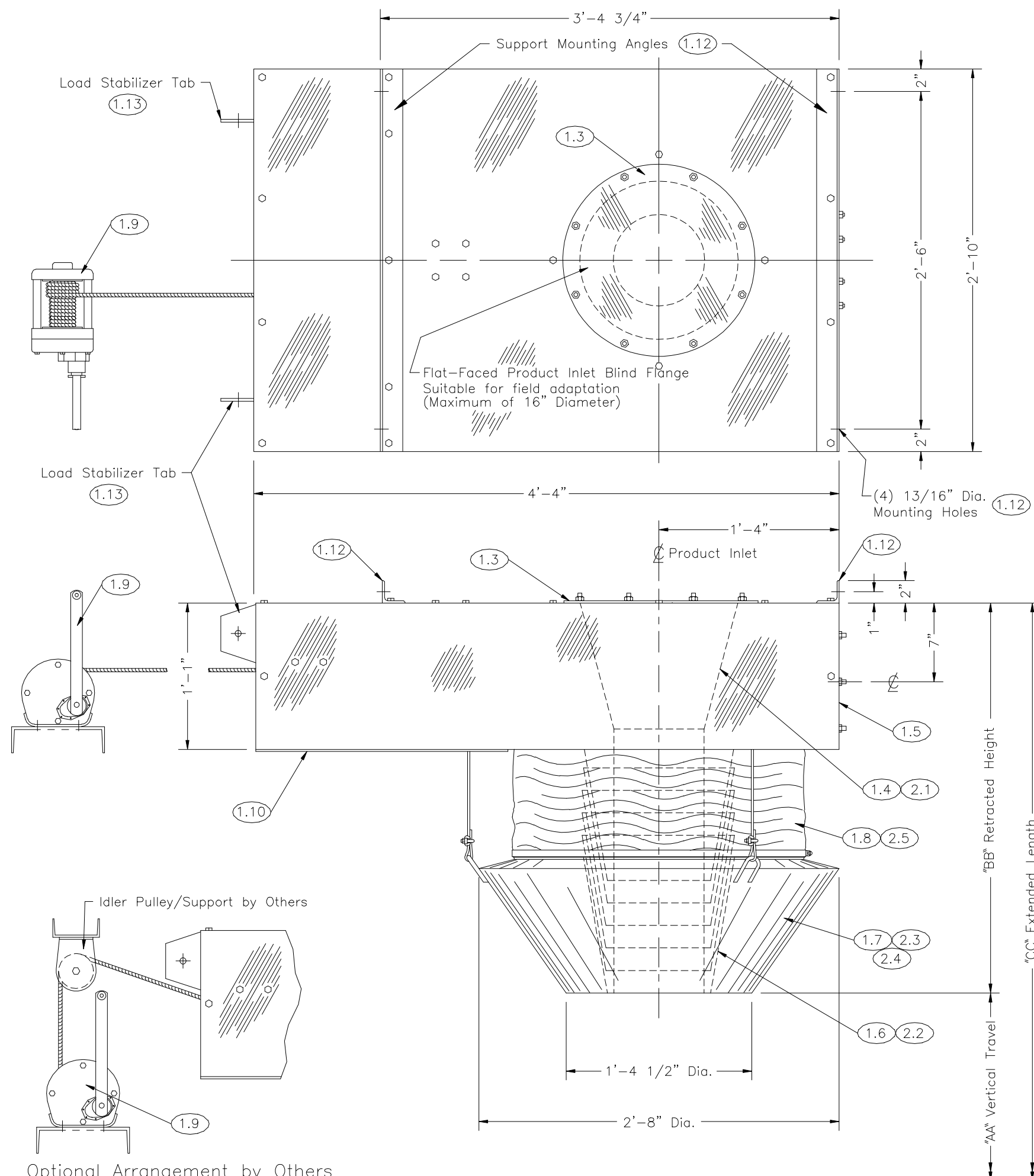
The Model T-8 Manually Operated Loading Spout is designed to provide Dust-Free loading (200 CFM Maximum Loading Capacity) of dry bulk materials into hatched trucks and/or railcars. The dust generated during loading is withdrawn from the point of discharge and through the annular passage between the product guide cones and the ROADSTAR 18® shroud. Once inside this passage, the velocity of the air stream decreases. This allows the relatively dense particulate to be drawn back into the gravity fed product stream. Extremely fine particulate continues through the negative air connection and into the user's ventilation system. For adequate ventilation, we recommend 500-800 CFM of negative air.

- Standard Features -

- 1.1 Non-contact components of 12 gauge carbon steel.
- 1.2 Up to 14 feet of Vertical Travel.
- 1.3 Flat-Faced product inlet ~ 16" diameter with blind flange for field adaptation.
- 1.4 75 degree sloped product inlet chute transition.
- 1.5 8" diameter flat-faced negative air connection.
- 1.6 5/16" thick Polyethylene internal self-stacking product guide cones.
- 1.7 Conical lower weldment of 12 gauge carbon steel.
- 1.8 Flexible "ROADSTAR 18®" shroud with internal galvanized steel reinforcing rings.
- 1.9 Weather protected hand winch with automatic double brake pawl. Gear ratio 2.88:1. Brake and gear hermetically sealed (Shipped loose for installation by others). Includes 30 feet of cable for remote mounting.
- 1.10 Three cable hoist and drive enclosed with guard and dust cover.
- 1.11 Loading spout is factory assembled, inspected and tested then skidded and crated for ease of shipment and installation.
- 1.12 Unit to be supported from Support Mounting Angles (by others).
- 1.13 Unit to be stabilized from load stabilizer tabs (by others).

- Optional Features -

- 2.1 Metal Inner Chute
 - 10 ga. 304SS or 316SS
 - 3/16" thick Abrasion Resistant Steel
- 2.2 Metal Inner Cones
 - 10 ga. 304SS or 316SS
 - 10 ga. mild steel
 - 3/16" thick Abrasion Resistant Steel
- 2.3 Conical or EZview Lower Weldment
 - 12 ga. 304SS or 316SS
 - 10 ga. mild steel
- 2.4 EZ view lower weldment assembly.
 Please Note: The use of the EZ view weldment increases the required negative air volume to 800 - 1000 CFM.
- 2.5 Hypalon Shroud W/ S.S. Reinforcing Rings



"AA" Vertical Travel	"BB" Retracted Height	"CC" Extended Length
2'-0"	2'-1"	4'-1"
4'-0"	2'-6"	6'-6"
6'-0"	3'-0"	9'-0"
8'-0"	3'-6"	11'-6"
10'-0"	4'-0"	14'-0"
12'-0"	4'-5"	16'-5"
14'-0"	4'-10"	18'-10"

(Date 6/9/98)

SLY INC. TECHNOLOGY FOR A CLEAN ENVIRONMENT

SLY Incorporated
 LOADING SPOUT & POSITIONER PRODUCTS
 8300 Dow Circle, Strongsville OH 44136
 (440)891-3200 * FAX:(440)891-3210

Model T-8 Manual Loading Spout

JOB: 3D-11383

Negative Air Flange Detail