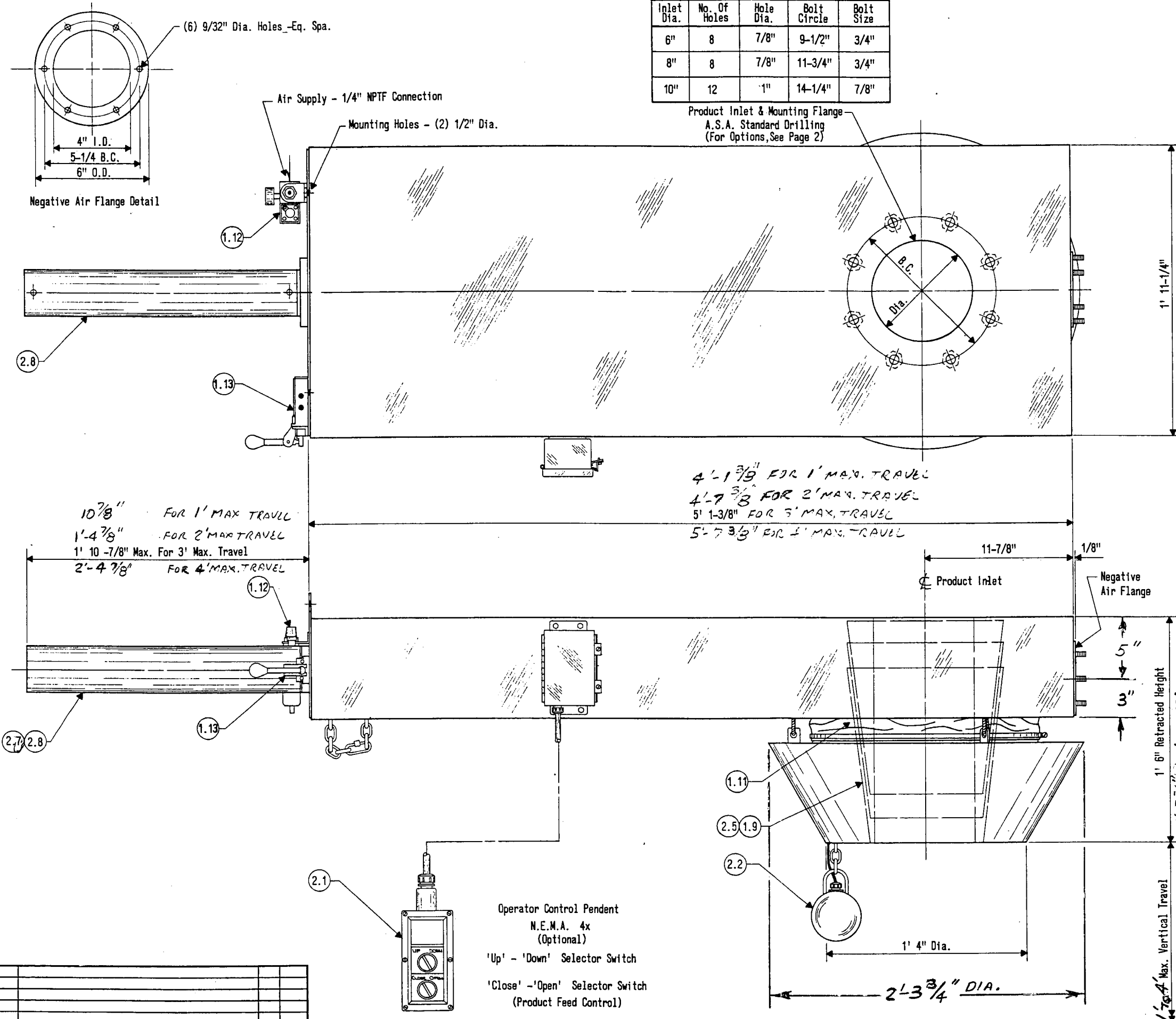


| Inlet Dia. | No. Of Holes | Hole Dia. | Bolt Circle | Bolt Size |
|------------|--------------|-----------|-------------|-----------|
| 6" | 8 | 7/8" | 9-1/2" | 3/4" |
| 8" | 8 | 7/8" | 11-3/4" | 3/4" |
| 10" | 12 | 1" | 14-1/4" | 7/8" |

Product Inlet & Mounting Flange
A.S.A. Standard Drilling
(For Options, See Page 2)



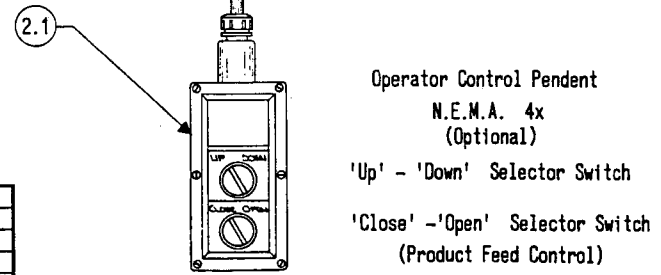
The Low Profile LP-8 Loading Spout is designed for applications where minimal spout headroom is available. Typical applications are for barrel and bin loading and some enclosed trucks. The LP-8 three cable pneumatic powered hoist mechanism is designed to handle a variety of bottom weldments, many of which are tailored to handle special or multiple sized containers. One bottom weldment is included in the base price of the spout.

1 Basic Loader Including :

- 1.1 Non-contact materials constructed of 12 ga. mild steel.
- 1.2 Retracted height 1'-6" MIN. @ 1' OR 2' TRAVEL.
- 1.3 Up to 4 feet of vertical travel.
- 1.4 Pneumatic cylinder powered three cable hoist arrangement with speed control.
- 1.5 Cable hoist arrangement enclosed in a guard and dust cover.
- 1.6 Adjustable vertical travel set point.
- 1.7 6 inch, 8 inch, or 10 inch diameter A.S.A. drilled flat face inlet flange.
- 1.8 4 inch diameter flanged negative air outlet connection, 600-800 C.F.M. is sufficient for most applications.
- 1.9 Internal self-stacking product guide cones. (5/16" THICK MOLDED URETHANE)
- 1.10 Product-contact parts constructed of 12 ga. mild steel.
- 1.11 Hypalon flexible outer shroud with stainless steel reinforcing rings. (19" O.D.)
- 1.12 Air filter/regulator and lubricator - 1/4" N.P.T.F.
- 1.13 Manual operated pneumatic power valve.
- 1.14 Loading spout shipped fully assembled, pipe, skidded and crated for ease of installation. Power valve and air trio may be field mounted for operators convenience.
- 1.15 Two instruction manuals provided with each loading spout.
- 1.16 Net assembled weight : 350 Lbs. + 15 LBS. / FT. TRAVEL.
- 1.17 Shipping weight : 30 Lbs. + NET WEIGHT.

2. Accessories & Options

- 2.1 Operators Control Pendant and 110 V.A.C. Solenoid Valve.
- 2.2 Product Level Sensor (Adjustable).
- 2.3 Anti - Static Grounding Line.
- 2.4 Explosion Proof Controls.
- 2.5 Product Contact Parts :
Abrasion Resistant Polymers or Steel Plate.
304 or 316 Stainless Steel.
- 2.6 Square and Raised Face Inlet Flanges.
- 2.7 Full Extended/Full Retracted Reed Switches.
- 2.8 J.I.C Standard Cylinder.



| REV | QUANT | REF. | DESCRIPTION |
|---|---------|------|--|
| DRAWN BY | J. Kurz | | |
| DATE | | | |
| CHECKED BY | | | |
| SCALE | N.T.S. | | |
| ORDER | | | |
| SLY Incorporated Loading Spouts & Positioner Products P.O. Box 3939, Cleveland OH 44101 (440) 891-3200 • Fax: (440) 891-3210 | | | LP-8 Air Operated Low Profile Loading Spout PAGE 1 of 2 3D 11340-1 |

| REV. | DATE | DESCRIPTION | BY | APP'D |
|------|------|-------------|----|-------|
| | | | | |
| | | | | |
| | | | | |