

XP-12 OPEN-STACKING Loading Spout  
 - General Specifications -

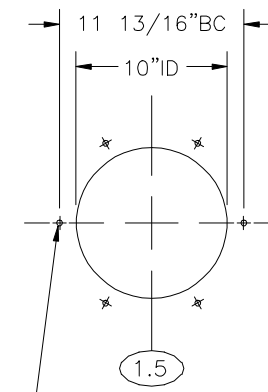
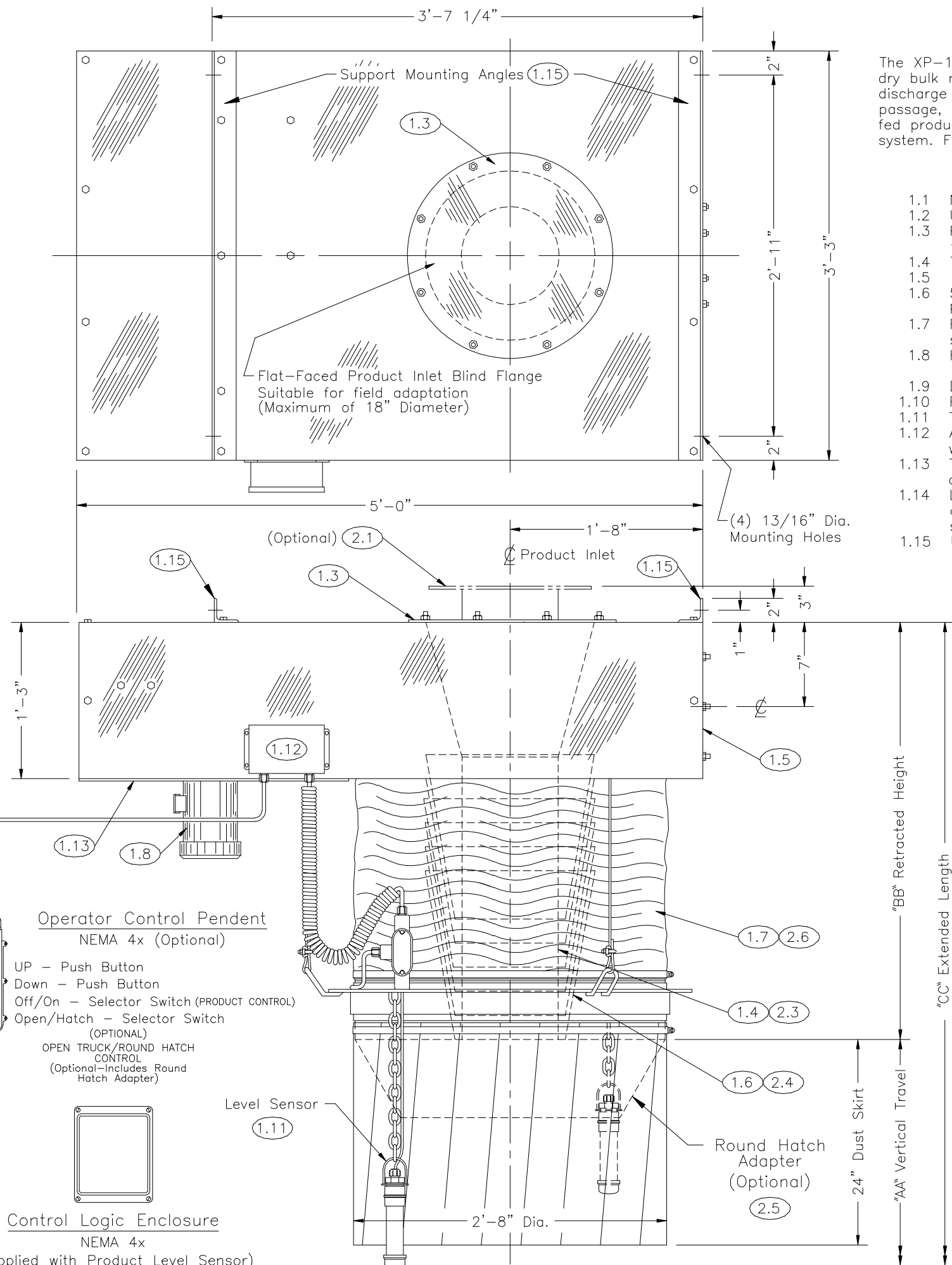
The XP-12 OPEN-STACKING Bulk Loading Spout is designed to provide Dust-Free loading (410 CFM Maximum Loading Capacity) of dry bulk materials into open trucks, railcars or open stockpiles. The dust generated during loading is withdrawn from the point of discharge and through the annular passage between the product guide cones and the ROADSTAR 18® shroud. Once inside this passage, the velocity of the air stream decreases. This allows the relatively dense particulate to be drawn back into the gravity fed product stream. Extremely fine particulate continues through the negative air connection and into the user's ventilation system. For adequate ventilation, we recommend 1200-1500 CFM of negative air.

- Standard Features -

- 1.1 Non-contact components of 12 gauge carbon steel.
- 1.2 Up to 20 feet of Vertical Travel.
- 1.3 Flat-Faced product inlet ~ 18" diameter with blind flange for field adaptation.
- 1.4 75 degree sloped product inlet chute transition.
- 1.5 10" diameter flat-faced negative air connection.
- 1.6 5/16" thick molded urethane internal self-stacking product guide cones.
- 1.7 Flexible "ROADSTAR 18®" shroud with internal galvanized steel reinforcing rings.
- 1.8 Heavy duty worm gear reducer with 1 HP ~ 1800 RPM ~ TEFC motor for cable hoist drive. (3/60/230-460VAC)
- 1.9 Double sprocket and chain drive. (not shown)
- 1.10 Full-Up and Full-Down rotary limit switch. (not shown)
- 1.11 Tilt-Type Mercury level sensor. (Automatic pile clearance)
- 1.12 All standard (and optional) electrical features factory wired to a J.I.C. junction box.
- 1.13 Three cable hoist and drive enclosed with guard and dust cover.
- 1.14 Loading spout is factory assembled, wired, inspected and tested then skidded and crated for ease of shipment and installation.
- 1.15 Unit to be supported from Support Mounting Angles (by others).

- Optional Features -

- 2.1 Product Inlet ~ Raised-Face A.N.S.I. drilled flanges  
 10"  12"  14"  16" Diameter
- 2.2 Electrical Controls  
 Operator's control pendent in a NEMA 4x enclosure.  
 Slack Cable limit switches.  
 Capacitance level sensor with control logic enclosure.  
 Explosion Proof/Intrinsically Safe.
- 2.3 Metal Inner Chute  
 10 ga. 304SS or 316SS  
 10 ga. mild steel  
 3/16" thick Abrasion Resistant Steel
- 2.4 Metal Inner Cones  
 10 ga. 304SS or 316SS  
 10 ga. mild steel  
 3/16" thick Abrasion Resistant Steel
- 2.5  Round hatch adapter weldment assembly.
- 2.6  Hypalon Shroud W/ S.S. Reinforcing Rings



Negative Air Flange Detail

Product Inlet Raised Face Flange  
 (OPTIONAL)  
 A.N.S.I. Standard Drilling

Inlet Dia.	Bolt Circle	Outside Dia.	Hole Dia.	No. of Holes	Bolt Size
10"	14 1/4"	16"	1"	12	7/8"
12"	17"	19"	1"	12	7/8"
14"	18 3/4"	21"	1 1/8"	12	1"
16"	21 1/4"	23 1/2"	1 1/8"	16	1"

"AA" Vertical Travel	"BB" Retracted Height	"CC" Extended Length
8'-0"	2'-9"	10'-9"
10'-0"	3'-2"	13'-2"
12'-0"	3'-4"	15'-4"
14'-0"	3'-7"	17'-7"
16'-0"	3'-9"	19'-9"
18'-0"	4'-2"	22'-2"
20'-0"	4'-5"	24'-5"

Add 24" to Retracted Height for Dust Skirt

NOT FOR CONSTRUCTION

(Date 7/6/98)

**SLY** INC. SLY Incorporated  
 TECHNOLOGY FOR A CLEAN ENVIRONMENT  
 8300 Dow Circle, Strongsville OH 44136  
 (440)891-3200 \* FAX:(440)891-3210

XP-12 O.S. Loading Spout

JOB: 3D-10529

**Operator Control Pendent**  
 NEMA 4x (Optional)

UP - Push Button  
 Down - Push Button  
 Off/On - Selector Switch (PRODUCT CONTROL)  
 Open/Hatch - Selector Switch (OPTIONAL)  
 OPEN TRUCK/ROUND HATCH CONTROL (Optional-Includes Round Hatch Adapter)

**Control Logic Enclosure**  
 NEMA 4x  
 (Supplied with Product Level Sensor)